



# INSTRAXX<sup>®</sup>

## System Components Guide & Specifications



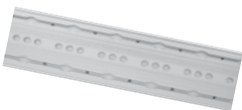


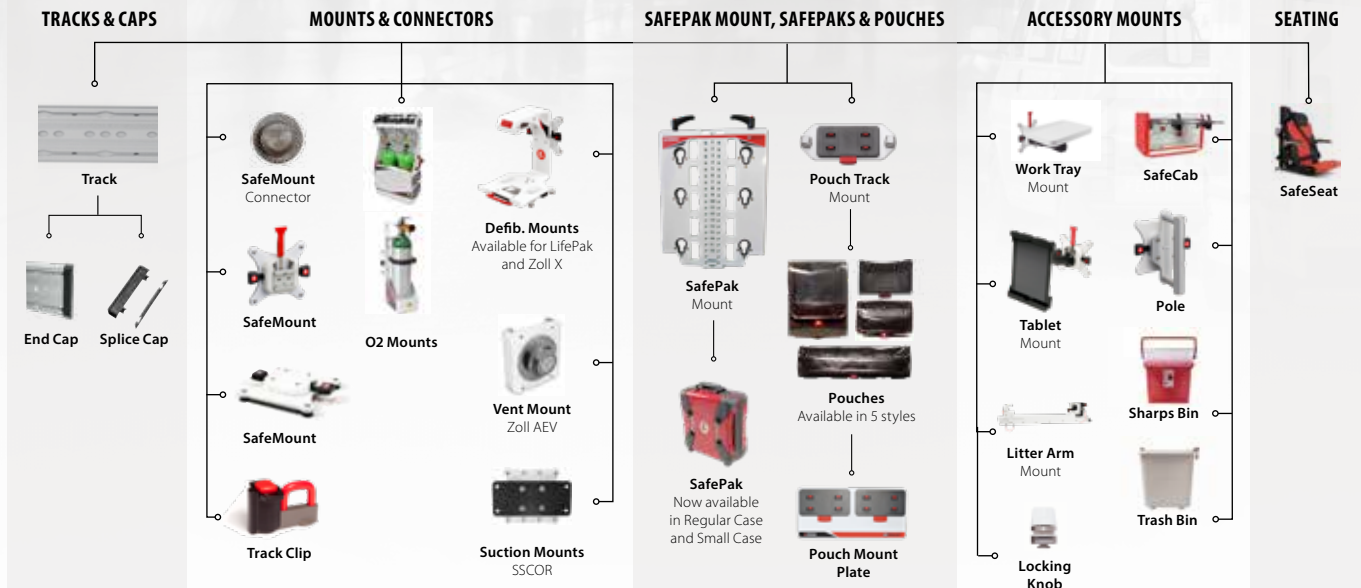


The iN/STRAXX Integrated Vehicle Component System **provides crash-ready safety** for providers and patients and **efficiency that reduces operating costs** for agencies.

The iN/STRAXX system is designed to secure loose equipment inside the ambulance and allow medics to deliver patient care from a seated, restrained position. This **reduces the risk of death and injury** during crashes, sudden stops, or hard maneuvers.

This modular system features wall-mounted tracks that secure a series of SafeMount Equipment Mounts, SafeCab Storage Cabinets, and SafePak Supply Bags. iN/STRAXX modularity supports better workflows and inventory management which **lowers operating costs**.





Delivery of care is now **safer, more convenient, and more efficient** with **IN/TRAXX**

**CRASH TESTED SAFETY**

- **Crash-ready** Dynamically crash-tested to the SAE J3043 requirement that keeps equipment secure during 26g impacts.
- **Seated & Restrained Delivery of Care** Reach supplies and deliver care without standing in a moving vehicle.
- **Soft-Sided Storage** SafePaks and pouches are soft-sided, eliminating potential strike hazards during hard maneuvers or crashes.

**REDUCED PROCESSING TIME & MAINTENANCE**

- **Faster Turn Time** SafePaks and pouches are easy to remove and clean, making restocking fast and easy.
- **Reduced Downtime** Damaged or out-of-service components can be quickly removed and replaced without taking a vehicle out of service.

**REDUCED SYSTEM WASTE**

- **Improved Inventory Control** SafePaks and pouches make inventory control easier with better visibility of supplies, reducing duplication, waste, and expired supplies.

**IMPROVED ERGONOMICS**

- **Easy Access** Modularity allows supplies and equipment to be placed next to the provider in the delivery of care position, eliminating the need to get up in a moving vehicle to access supplies.
- **Provider Specific Configuration** Quickly reposition equipment and supplies exactly where you want them.

**IMPROVED FLEXIBILITY**

- **Interoperability** Supplies and equipment are interchangeable across vehicles and vehicle types.
- **Mission-Specific Customization** Equipment and supplies can be removed or repositioned to adapt a vehicle to different response scenarios (e.g., viral outbreak or mass casualty).
- **Expandable System** Components can be added as your needs change.

**IMPROVED INFECTION CONTROL**

- **Cleaning and Decontamination** Components are removable and power washable for thorough, easy cleaning.
- **Containment** Individual pouches isolate potential contamination to specific areas, limiting the exposure of expensive supplies.

**REDUCE COST OF OWNERSHIP**

- **Reduced Space Requirements** Requires less space for storage and equipment, allowing use of smaller, less expensive vehicles.
- **Increased Utilization** Faster turn times so your vehicle is more readily available for revenue-generating activity.


All products come with a **2 Year Warranty**, unless stated otherwise.

**CERTIFICATIONS** Fully compliant with SAE J3043 testing requirements. Meets KKK-A-1822F, NFPA-1917, and CAAS GVS v2.0 Standards.

Learn more at [www.ferno.com/us/intraxx](http://www.ferno.com/us/intraxx)



*Scalable to Any Size Vehicle*



**55 lb  
25 kg**

*Per Set of 4  
Drop-in Points*

**Load Capacity**

The track is designed to hold 55 lb/25 kg per 12 in/305 mm section (one set of four drop-in points). Inspect the track if the load capacity has been exceeded.

**Track System | 1016 mm**

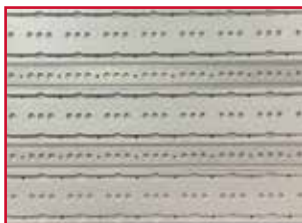
Most commonly used track for wall and bench top applications and can be cut to size.



	IMPERIAL	METRIC
<b>Part Number</b>	0480001	
<b>Dimensions</b>	W 7.5 in D 0.5 in L 40 in	W 189 mm D 12.7 mm L 1016 mm
<b>Weight</b>	7.5 lb	3.4 kg
<b>Load Capacity</b>	220.4 lb	100 kg
<b>Crash Tested</b>	10g, 22g, 26g	

**Track System | TracLINXX  
PRE-RELEASE ONLY**

The New iN/TRAXX TracLINXX allows for creating an iN/TRAXX "wall" using a minimum of two of the #0480001 tracks placed on either side of the TracLINXX. There is no limit on the number of tracks you add to create a wall.



	IMPERIAL	METRIC
<b>Part Number</b>	0480235	
<b>Dimensions</b>	W 3.4 in D 0.5 in L 40 in	W 87.5 mm D 12.7 mm L 1016 mm
<b>Weight</b>	3.3 lb	1.5 kg
<b>Crash Tested</b>	10g, 22g, 26g	

- Refer to separate customer drawings for mounting details
- Refer to separate operators manual
- iN/TRAXX wall shown has two #0480235 tracks & three #0480001 tracks

**KEY**

(W) Width is measured as 'Y' axis in relation to mounting to the track  
 (D) Depth is measured as 'Z' axis in relation to mounting to the track  
 (L) Length is measured as 'X' axis in relation to mounting to the track

Tracks

**Track System | 1016 mm,  
No Holes (Bonding)**

This track is used for bonding applications where there are no fixing holes. This track is suitable for wall, ceiling and bench top applications. Bonding method is the sole responsibility of the person installing the track.



	IMPERIAL	METRIC
<b>Part Number</b>	0480073	
<b>Dimensions</b>	W 7.4 in D 0.5 in L 40 in	W 189 mm D 12.7 mm L 1016 mm
<b>Weight</b>	7.5 lb	3.4 kg
<b>Load Capacity</b>	220.4 lb	100 kg
<b>Crash Tested</b>	10g, 22g, 26g	

**Track System | 1016 mm  
Left & Right**

This track is suitable for wall, ceiling and bench top applications. It has a single drop in zone located in either the left or right side.



	IMPERIAL	METRIC
<b>Part Number</b>	0480107	
<b>Dimensions</b>	W 7.4 in D 0.5 in L 40 in	W 189 mm D 12.7 mm L 1016 mm
<b>Weight</b>	7.5 lb	3.4 kg
<b>Load Capacity</b>	220.4 lb	100 kg
<b>Crash Tested</b>	10g, 22g, 26g	

**KEY**

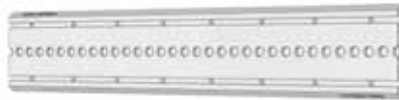
(W) Width is measured as 'Y' axis in relation to mounting to the track  
 (D) Depth is measured as 'Z' axis in relation to mounting to the track  
 (L) Length is measured as 'X' axis in relation to mounting to the track



**Track System | 1016 mm**

Blank

This track has no drop-in zone and is generally installed to lengthen a piece of mounted equipment's travel. This track is suitable for wall, ceiling and bench top applications.



	IMPERIAL	METRIC
<b>Part Number</b>	0480108	
<b>Dimensions</b>	W 7.4 in D 0.5 in L 40 in	W 189 mm D 12.7 mm L 1016 mm
<b>Weight</b>	7.5 lb	3.4 kg
<b>Load Capacity</b>	220.4 lb	100 kg
<b>Crash Tested</b>	10g, 22g, 26g	

**Track System | 1016 Centre**

Drop-in

This track is suitable for wall, ceiling and bench top applications. It has a single drop in zone located in the center of the track. This allows more flexibility and choice when designing your ambulance.



	IMPERIAL	METRIC
<b>Part Number</b>	0480171	
<b>Dimensions</b>	W 7.4 in D 0.5 in L 40 in	W 189 mm D 12.7 mm L 1016 mm
<b>Weight</b>	7.5 lb	3.4 kg
<b>Load Capacity</b>	220.4 lb	100 kg
<b>Crash Tested</b>	10g, 22g, 26g	

**KEY**

- (W) Width is measured as 'Y' axis in relation to mounting to the track
- (D) Depth is measured as 'Z' axis in relation to mounting to the track
- (L) Length is measured as 'X' axis in relation to mounting to the track

**Track System |** 340 mm Track,  
Black End Caps

This short track is commonly used for mounting single pieces of equipment supplied with black end caps. This track is suitable for wall and bench top applications.



	IMPERIAL	METRIC
<b>Part Number</b>	0480062	
<b>Dimensions</b>	W 7.6 in D 0.7 in L 13.4 in	W 193 mm D 17 mm L 340 mm
<b>Weight</b>	2.6 lb	1.2 kg
<b>Load Capacity</b>	55.1 lb	25 kg
<b>Crash Tested</b>	10g, 22g, 26g	

\* Limited Lifetime Warranty

**End Caps |** Regular

End caps are used to fill an end of the track and can be removed if the track is to be extended.



	IMPERIAL	METRIC
<b>Part Number</b>	Black: 0480002   Grey: 0480003 <i>(While Supplies Last)</i>	
<b>Dimensions</b>	W 7.6 in D 0.7 in L 1.9 in	W 193 mm D 17 mm L 48 mm
<b>Weight</b>	0.11 lb	0.05 kg
<b>Crash Tested</b>	10g, 22g, 26g	

**KEY**

(W) Width is measured as 'Y' axis in relation to mounting to the track  
 (D) Depth is measured as 'Z' axis in relation to mounting to the track  
 (L) Length is measured as 'X' axis in relation to mounting to the track

**End Caps | Thin**

Thin end caps are used to fill an end of the track and can be removed if the track is to be extended. Thin end caps are used where the track end is close to a wall or requires mounts to be still entered from though the end cap.



	IMPERIAL	METRIC
<b>Part Number</b> Black: 0480049   Grey: 0480050 <i>(While Supplies Last)</i>		
<b>Dimensions</b>	W 7.4 in D 0.5 in L 0.15 in	W 189 mm D 12.7 mm L 3.7 mm
<b>Weight</b>	0.02lb	0.01 kg
<b>Crash Tested</b>	10g, 22g, 26g	

**T-Splice Caps**

T-Splice Caps are used where horizontal and vertical track meet.



	IMPERIAL	METRIC
<b>Part Number</b> Black: 0480005   Grey: 0480006 <i>(While Supplies Last)</i>		
<b>Dimensions</b>	W 7.6 in D 0.6 in L 0.9 in	W 193 mm D 16 mm L 23 mm
<b>Weight</b>	0.08 lb	0.04 kg
<b>Crash Tested</b>	10g, 22g, 26g	

**KEY**

(W) Width is measured as 'Y' axis in relation to mounting to the track  
 (D) Depth is measured as 'Z' axis in relation to mounting to the track  
 (L) Length is measured as 'X' axis in relation to mounting to the track



Track Connectors

**SafeMount | Threaded (25 kg)**

This SafeMount with a 25 kg load capacity is our most popular mount. It can be used to mount a variety of equipment.



	IMPERIAL	METRIC
<b>Part Number</b>	0480010	
<b>Dimensions</b>	W 5.9 in D 1.4 in L 6.6 in	W 151 mm D 34.5 mm L 167 mm
<b>Weight</b>	1.86 lb	0.85 kg
<b>Load Capacity</b>	55.1 lb	25 kg
<b>Crash Tested</b>	10g, 22g, 26g	

**SafeMount | Threaded (12 kg)**

The 12 kg capacity SafeMount while lesser in capacity functions the same as the 25 kg version. It can be used to mount a variety of equipment.



	IMPERIAL	METRIC
<b>Part Number</b>	0480146	
<b>Dimensions</b>	W 5.9 in D 1.6 in L 6.6 in	W 151 mm D 40 mm L 167 mm
<b>Weight</b>	1.6 lb	0.74 kg
<b>Load Capacity</b>	26.5 lb	12 kg
<b>Crash Tested</b>	10g, 22g, 26g	

**KEY**

(W) Width is measured as 'Y' axis in relation to mounting to the track  
 (D) Depth is measured as 'Z' axis in relation to mounting to the track  
 (L) Length is measured as 'X' axis in relation to mounting to the track

Track Connectors

**SafeMount | HD Threaded (40 kg)**

This SafeMount with a 40 kg load capacity can be used to mount a variety of equipment. Due to the weight this SafeMount can carry, this product will not be sold without first advising Ferno IN/TRAXX of its intended use.



	IMPERIAL	METRIC
<b>Part Number</b>	0480172	
<b>Dimensions</b>	W 6 in D 1.4 in L 6.7 in	W 151 mm D 34.5 mm L 167 mm
<b>Weight</b>	1.87 lb	0.85 kg
<b>Load Capacity</b>	88 lb	40 kg
<b>Crash Tested</b>	10g, 22g, 26g	

• This product will not be sold without first advising Ferno IN/TRAXX of its intended use

**SafeMount | With Connector**

The connector in this SafeMount provides an alternative to mounting the equipment directly to the SafeMount providing the ability to remove the equipment at short notice.



	IMPERIAL	METRIC
<b>Part Number</b>	0480011	
<b>Dimensions</b>	W 7.4 in D 1.9 in L 6.6 in	W 187 mm D 48.5 mm L 167 mm
<b>Weight</b>	1.65 lb	0.75 kg
<b>Load Capacity</b>	22 lb	10 kg
<b>Crash Tested</b>	10g, 22g, 26g	

**KEY**

(W) Width is measured as 'Y' axis in relation to mounting to the track  
 (D) Depth is measured as 'Z' axis in relation to mounting to the track  
 (L) Length is measured as 'X' axis in relation to mounting to the track

Track Connectors

**Track Clip**

Track clips provide a suitable area on the track to attach equipment or strapping points.



	IMPERIAL	METRIC
<b>Part Number</b>	0480008	
<b>Dimensions</b>	W 2.7 in D 1.6 in L 1.6 in	W 69 mm D 40.5 mm L 41.5 mm
<b>Weight</b>	0.2 lb	.08kg
<b>Load Capacity</b>	5 lb	2.27 kg
<b>Crash Tested</b>	10g, 22g, 26g	

**KEY**

(W) Width is measured as 'Y' axis in relation to mounting to the track  
 (D) Depth is measured as 'Z' axis in relation to mounting to the track  
 (L) Length is measured as 'X' axis in relation to mounting to the track

## SafePak Mount, SafePaks & SafeCabs

### SafePak | Mount

The SafePak Mount provides the area to secure the small and regular size SafePaks.



	IMPERIAL	METRIC
<b>Part Number</b>	0480022 <i>(While Supplies Last)</i>	
<b>Dimensions</b>	W 43.9 in D 2 in L 19 in	W 1114 mm D 50 mm L 485 mm
<b>Weight</b>	12.8 lb	5.8 kg
<b>Load Capacity</b>	26.5 lb	12 kg
<b>Crash Tested</b>	10g, 22g, 26g	

### SafePak | SafePak Multi-Mount 3-Row

The SafePak Mount provides the area to secure the small and regular size SafePaks. This has many location options for greater flexibility.



	IMPERIAL	METRIC
<b>Part Number</b>	0480193 (SafeMount Included) 0480209 (Base Plate Only)	
<b>Dimensions</b>	W 23.6 in D 1.1 in L 16.7 in	W 600 mm D 30 mm L 425 mm
<b>Weight</b>	0480193 7.3 lb 0480209 5 lb	3.3 kg 2.3 kg
<b>Load Capacity</b>	26.5 lb	12 kg
<b>Crash Tested</b>	10g, 22g, 26g	

- SafeMount supplied with 0480193
- No SafeMount supplied with 0480209
- Refer to separate operators manual

#### KEY

(W) Width is measured as 'Y' axis in relation to mounting to the track  
 (D) Depth is measured as 'Z' axis in relation to mounting to the track  
 (L) Length is measured as 'X' axis in relation to mounting to the track



## SafePak Mount, SafePaks & SafeCabs

### SafePak | SafePak Multi-Mount 2-Row

The SafePak Mount provides the area to secure the small and regular size SafePaks. This has many location options for greater flexibility.



0480201



0480207

### SafePak | Ledge and Strap Kit

The SafePak Ledge and Strap Kit can be added to the new SafePak mounting plate to allow for the retention of different sized SafePaks for greater flexibility.



#### KEY

(W) Width is measured as 'Y' axis in relation to mounting to the track  
 (D) Depth is measured as 'Z' axis in relation to mounting to the track  
 (L) Length is measured as 'X' axis in relation to mounting to the track

	IMPERIAL	METRIC
<b>Part Number</b>	0480201 (SafeMount Included) 0480207 (Base Plate Only)	
<b>Dimensions</b>	W 16 in D 1.8 in L 17 in	W 401 mm D 44 mm L 425 mm
<b>Weight</b>	0480201 5.3 lb 0480207 3.5 lb	2.4 kg 1.6 kg
<b>Load Capacity</b>	26.4 lb 12 kg	
<b>Crash Tested</b>	10g, 22g, 26g	

- SafeMount supplied with 0480201
- No SafeMount supplied with 0480207
- Refer to separate operators manual

	IMPERIAL	METRIC
<b>Part Number</b>	0480204	
<b>Dimensions</b>	W 4.2 in D 4.2 in L 10 in	W 104 mm D 104 mm L 250 mm
<b>Weight</b>	0.88 lb 0.4 kg	
<b>Load Capacity</b>	17.6 lb 8 kg	
<b>Crash Tested</b>	10g, 22g, 26g	

- Compatible with part numbers 0480193, 0480209, 0480207, and 0480201
- Refer to separate operators manual

## SafePak Mount, SafePaks & SafeCabs

### SafePak | Small

The small SafePak allows the user to securely stow 2 small SafePaks per SafePak mount. All SafePaks are removable allowing for a comprehensive kit to be taken to the scene or patient outside of the vehicle. SafePaks come complete with a full set of pouches as shown.



	IMPERIAL	METRIC
<b>Part Number</b>	Red: 0480023   Blue: 0480077*	
<b>Dimensions</b>	W 12.8 in D 9.4 in L 18.1 in	W 325 mm D 240 mm L 460 mm
<b>Weight</b>	11.1 lb	5 kg
<b>Load Capacity</b>	17 lb	8 kg
<b>Crash Tested</b>	10g, 22g, 26g	

\*While Supplies Last

### SafePak | Regular

The regular SafePak provides ample space to install pouches with the flexibility of removing the SafePak from the wall to attend scenes located outside of the vehicle. SafePaks come complete with a full set of pouches as shown.



	IMPERIAL	METRIC
<b>Part Number</b>	Blue: 0480059*   White: 0480060*	
<b>Dimensions</b>	W 18.9 in D 9.4 in L 18.1 in	W 481 mm D 240 mm L 460 mm
<b>Weight</b>	16.9 lb	7.7 kg
<b>Load Capacity</b>	25 lb	11.3 kg
<b>Crash Tested</b>	10g, 22g, 26g	

\*While Supplies Last

#### KEY

(W) Width is measured as 'Y' axis in relation to mounting to the track  
 (D) Depth is measured as 'Z' axis in relation to mounting to the track  
 (L) Length is measured as 'X' axis in relation to mounting to the track

## SafePak Mount, SafePaks & SafeCabs

### SafeCab | Small

Installed on INJTRAXX, the small SafeCab provides an area for small items to be safely secured during transit. All SafeCabs have the ability to display tamper evidence with the right locking lever displaying green for untampered or red for tampered. 0480085 is Bulkhead compliant.



	IMPERIAL	METRIC
<b>Part Number</b>	0480085	
<b>Dimensions</b>	W 13.8 in D 13 in L 21.5 in	W 350 mm D 330 mm L 545 mm
<b>Weight</b>	29.8 lb	13.5 kg
<b>Load Capacity</b>	11 lb	5 kg
<b>Crash Tested</b>	10g, 22g, 26g	

### SafeCab | Medium

Installed on INJTRAXX, the medium SafeCab provides area for items to be safely secured during transit. Our most popular choice in SafeCabs.



	IMPERIAL	METRIC
<b>Part Number</b>	0480086	
<b>Dimensions</b>	W 13.8 in D 13 in L 31.5 in	W 350 mm D 330 mm L 800 mm
<b>Weight</b>	36.4 lb	16.5 kg
<b>Load Capacity</b>	17.6 lb	8 kg
<b>Crash Tested</b>	10g, 22g, 26g	

#### KEY

(W) Width is measured as 'Y' axis in relation to mounting to the track  
 (D) Depth is measured as 'Z' axis in relation to mounting to the track  
 (L) Length is measured as 'X' axis in relation to mounting to the track

## SafePak Mount, SafePaks & SafeCabs

### SafeCab | Large

Installed on IN/TRAXX, the largest SafeCab provides sufficient area to store those longer awkward items that need to be safely secured during transit.



	IMPERIAL	METRIC
<b>Part Number</b>	0480087	
<b>Dimensions</b>	W 13.8 in D 13 in L 46.5 in	W 350 mm D 330 mm L 1180 mm
<b>Weight</b>	51.8 lb	23.5 kg
<b>Load Capacity</b>	26.5 lb	12 kg
<b>Crash Tested</b>	10g, 22g, 26g	

**KEY**

(W) Width is measured as 'Y' axis in relation to mounting to the track

(D) Depth is measured as 'Z' axis in relation to mounting to the track

(L) Length is measured as 'X' axis in relation to mounting to the track



## SafePak Pouches

### SafePak Pouch | Small

All pouches are capable of displaying the contents. Pouches can be labeled using label sheets available separately. This option uses half of a Pouch Carrier. See Pt No 0480030 for Pouch Mount Carrier.



	IMPERIAL	METRIC
<b>Part Number</b>	0480026	
<b>Dimensions</b>	W 4.7 in D 2.8 in L 3.9 in	W 120 mm D 70 mm L 100 mm
<b>Weight</b>	0.3 lb	0.14 kg
<b>Load Capacity</b>	0.5 lb	0.23 kg
<b>Crash Tested</b>	10g, 22g, 26g	

- Pack of 2
- Label Sheets for Medium Pouch available (2381858)

### SafePak Pouch | Medium

All pouches are capable of displaying the contents. Pouches can be labeled using label sheets available separately. The medium option introduces the ability to divide the pouch into equal parts via the SafePak Pouch Divider. The medium takes up 1 pouch carrier.



	IMPERIAL	METRIC
<b>Part Number</b>	0480027	
<b>Dimensions</b>	W 4.7 in D 2.8 in L 7.9 in	W 120 mm D 70 mm L 200 mm
<b>Weight</b>	0.6 lb	0.25 kg
<b>Load Capacity</b>	2.5 lb	1.13 kg
<b>Crash Tested</b>	10g, 22g, 26g	

- Pack of 2
- Label Sheets for Small Pouch available (2381859)

**KEY**

(W) Width is measured as 'Y' axis in relation to mounting to the track  
 (D) Depth is measured as 'Z' axis in relation to mounting to the track  
 (L) Length is measured as 'X' axis in relation to mounting to the track

SafePak Pouches

**SafePak Pouch | Large Vertical**

All pouches are capable of displaying the contents. Pouches can be labeled using label sheets available separately. The large vertical pouch uses 2 pouch carriers and has provision for use of the Pouch Divider.



	IMPERIAL	METRIC
<b>Part Number</b>	0480028	
<b>Dimensions</b>	W 10.2 in D 2.8 in L 7.9 in	W 260 mm D 70 mm L 200 mm
<b>Weight</b>	0.9 lb	0.4 kg
<b>Load Capacity</b>	4.5 lb	2 kg
<b>Crash Tested</b>	10g, 22g, 26g	

- Pack of 2
- Label Sheets for Medium Pouch available (2381859)

**SafePak Pouch | Large Horizontal**

All pouches are capable of displaying the contents. Pouches can be labeled using label sheets available separately. The large horizontal pouch uses 2 Pouch Carriers. This pouch can be used with the Pouch Divider to make up to 4 compartments within.



	IMPERIAL	METRIC
<b>Part Number</b>	0480029	
<b>Dimensions</b>	W 4.7 in D 2.8 in L 15.7 in	W 120 mm D 70 mm L 400 mm
<b>Weight</b>	0.9 lb	0.4 kg
<b>Load Capacity</b>	4.5 lb	2 kg
<b>Crash Tested</b>	10g, 22g, 26g	

- Pack of 2
- Label Sheets for Large Pouch available (2381860)

**KEY**

(W) Width is measured as 'Y' axis in relation to mounting to the track  
 (D) Depth is measured as 'Z' axis in relation to mounting to the track  
 (L) Length is measured as 'X' axis in relation to mounting to the track

## SafePak Pouches

### SafePak Pouch | Medium Mesh

Medium Mesh SafePak Pouches are essentially a one-handed operation proving to be the quickest and easiest pouches to access. Uses 1 Pouch Carrier with no Pouch Divider.



	IMPERIAL	METRIC
<b>Part Number</b>	0480092	
<b>Dimensions</b>	W 4.7 in D Expandable to 4 in L 7.9 in	W 120 mm D 101.6 mm L 200 mm
<b>Weight</b>	0.4 lb	0.2 kg
<b>Load Capacity</b>	2.5 lb	1.13 kg

- Pack of 2
- Pictured with Spiracle disposable BVM

### SafePak Pouch Divider

Used in the medium and large pouches and provides the ability to divide a pouch into different areas.



	IMPERIAL	METRIC
<b>Part Number</b>	0480072	
<b>Dimensions</b>	W 3.9 in D 2.6 in L 1.57 in	W 99 mm D 64.8 mm L 40 mm

- Pack of 8

#### KEY

(W) Width is measured as 'Y' axis in relation to mounting to the track  
 (D) Depth is measured as 'Z' axis in relation to mounting to the track  
 (L) Length is measured as 'X' axis in relation to mounting to the track

SafePak Pouches

**SafePouch | Small Jumbo**

All pouches are capable of displaying the contents. Pouches can be labeled using sheets available separately. This option uses half a pouch mount carrier plates (#0480030). See SafePak Pouch Mounts for multiple options.



	IMPERIAL	METRIC
<b>Part Number</b>	0480173	
<b>Dimensions</b>	W 4.7 in D 4.7 in L 3.9 in	W 120 mm D 120 mm L 100 mm
<b>Weight</b>	0.4 lb	0.2 kg
<b>Load Capacity</b>	.5 lb	.22 kg
<b>Crash Tested</b>	10g, 20g, 26g	

- Pack of 2
- Labels size medium, available standard or custom
- Contact sales rep for custom labels

**SafePouch | Medium Jumbo**

All pouches are capable of displaying the contents. Pouches can be labeled using sheets available separately. This option uses one pouch mount carrier plate (#0480030). See SafePak Pouch Mounts for multiple options.



	IMPERIAL	METRIC
<b>Part Number</b>	0480174	
<b>Dimensions</b>	W 4.7 in D 4.7 in L 7.9 in	W 120 mm D 120 mm L 200 mm
<b>Weight</b>	0.6 lb	0.3 kg
<b>Load Capacity</b>	2.5 lb	1.13 kg
<b>Crash Tested</b>	10g, 20g, 26g	

- Pack of 2
- Labels size medium, available standard or custom
- Contact sales rep for custom labels

**KEY**

(W) Width is measured as 'Y' axis in relation to mounting to the track  
 (D) Depth is measured as 'Z' axis in relation to mounting to the track  
 (L) Length is measured as 'X' axis in relation to mounting to the track



## SafePak Pouches

### SafePouch | Large Vertical Jumbo

All pouches are capable of displaying the contents. Pouches can be labeled using sheets available separately. This option uses two pouch mount carrier plates (#0480030). See SafePak Pouch Mounts for multiple options.



	IMPERIAL	METRIC
<b>Part Number</b>	0480175	
<b>Dimensions</b>	W 10.2 in D 4.7 in L 7.9 in	W 260 mm D 120 mm L 200 mm
<b>Weight</b>	1 lb	0.5 kg
<b>Load Capacity</b>	4.5 lb	2 kg
<b>Crash Tested</b>	10g, 20g, 26g	

- Pack of 2
- Labels size medium, available standard or custom
- Contact sales rep for custom labels

### SafePouch | Large Horizontal Jumbo

All pouches are capable of displaying the contents. Pouches can be labeled using sheets available separately. This option uses two pouch mount carrier plates (#0480030). See SafePak Pouch Mounts for multiple options.



	IMPERIAL	METRIC
<b>Part Number</b>	0480176	
<b>Dimensions</b>	W 4.7 in D 4.7 in L 15.7 in	W 120 mm D 120 mm L 400 mm
<b>Weight</b>	1 lb	0.5 kg
<b>Load Capacity</b>	4.5 lb	2 kg
<b>Crash Tested</b>	10g, 20g, 26g	

- Pack of 2
- Labels size large, available standard or custom
- Contact sales rep for custom labels

**KEY**

(W) Width is measured as 'Y' axis in relation to mounting to the track  
 (D) Depth is measured as 'Z' axis in relation to mounting to the track  
 (L) Length is measured as 'X' axis in relation to mounting to the track

SafePak Pouches

**SafePouch |** Dual Large Vertical Jumbo

All pouches are capable of displaying the contents. Pouches can be labeled using sheets available separately. This option uses four pouch mount carrier plates (#0480030). See SafePak Pouch Mounts for multiple options.



	IMPERIAL	METRIC
<b>Part Number</b>	0480177	
<b>Dimensions</b>	W 10.2 in D 4.7 in L 15.7 in	W 260 mm D 120 mm L 400 mm
<b>Weight</b>	1.8 lb	0.9 kg
<b>Load Capacity</b>	8.8 lb	4 kg
<b>Crash Tested</b>	10g, 20g, 26g	

- Pack of 2
- Labels size large, available standard or custom
- Contact sales rep for custom labels

**KEY**

(W) Width is measured as 'Y' axis in relation to mounting to the track  
 (D) Depth is measured as 'Z' axis in relation to mounting to the track  
 (L) Length is measured as 'X' axis in relation to mounting to the track

## SafePak Pouch Mounts

### Pouch Mount Carrier | Single

Pouch Mount Carriers are used in the SafePaks, Pouch Track Mounts, Pouch Mount Plates.



	IMPERIAL	METRIC
<b>Part Number</b>	0480030	
<b>Dimensions</b>	W 4.6 in D 0.6 in L 7.5 in	W 118 mm D 15 mm L 190 mm
<b>Weight</b>	0.23 lb	0.11 kg
<b>Load Capacity</b>	5 lb	2.4 kg
<b>Crash Tested</b>	10g, 22g, 26g	

### Pouch Track Mount | Single

The Single Track Mount has the ability to be installed anywhere on the INTRAXX Track. It will accept and support the small and medium pouches.



	IMPERIAL	METRIC
<b>Part Number</b>	0480031	
<b>Dimensions</b>	W 4.9 in D 2.1 in L 11.4 in	W 125 mm D 53.9 mm L 290 mm
<b>Weight</b>	1.59 lb	0.73 kg
<b>Load Capacity</b>	5 lb	2.4 kg
<b>Crash Tested</b>	10g, 22g, 26g	

#### KEY

(W) Width is measured as 'Y' axis in relation to mounting to the track  
 (D) Depth is measured as 'Z' axis in relation to mounting to the track  
 (L) Length is measured as 'X' axis in relation to mounting to the track

## SafePak Pouch Mounts

### Pouch Track Mount |

#### Double Vertical

The Double Vertical mount also provides the flexibility to install anywhere and will accept and support 2 medium, 1 large vertical or 4 small pouches.



	IMPERIAL	METRIC
<b>Part Number</b>	0480032	
<b>Dimensions</b>	W 10.6 in D 2.1 in L 11.4 in	W 268 mm D 53.9 mm L 290 mm
<b>Weight</b>	2.7 lb	1.23 kg
<b>Load Capacity</b>	5 lb	2.4 kg
<b>Crash Tested</b>	10g, 22g, 26g	

### Pouch Track Mount |

#### Double Horizontal

This mount provides 2 carriers capable of securing the small, medium and large horizontal pouches.



	IMPERIAL	METRIC
<b>Part Number</b>	0480083	
<b>Dimensions</b>	W 4.9 in D 2.1 in L 21.5 in	W 125 mm D 53.9 mm L 545 mm
<b>Weight</b>	2.2 lb	1.14 kg
<b>Load Capacity</b>	5 lb	2.4 kg
<b>Crash Tested</b>	10g, 22g, 26g	

**KEY**

(W) Width is measured as 'Y' axis in relation to mounting to the track  
 (D) Depth is measured as 'Z' axis in relation to mounting to the track  
 (L) Length is measured as 'X' axis in relation to mounting to the track

## SafePak Pouch Mounts

### Pouch Mount Plate | 3T2

The 6 carriers can take a multitude of pouches increasing the flexibility of your storage options. The Pouch Mount Plates are installed directly to the wall of the vehicle.



	IMPERIAL	METRIC
<b>Part Number</b>	0480155	
<b>Dimensions</b>	W 17.8 in D 1.1 in L 16.4 in	W 453 mm D 28.5 mm L 416 mm
<b>Weight</b>	4.2 lb	1.9 kg
<b>Load Capacity</b>	20.6 lb	9.4 kg
<b>Crash Tested</b>	10g, 22g, 26g	

### Pouch Mount Plate | 4T2

The largest mount with 8 carriers can be setup to hold any pouch and can be configured easily within the vehicle.



	IMPERIAL	METRIC
<b>Part Number</b>	0480160	
<b>Dimensions</b>	W 23.1 in D 1.1 in L 16.4 in	W 588 mm D 28.5 mm L 416 mm
<b>Weight</b>	5.4 lb	2.5 kg
<b>Load Capacity</b>	27.4 lb	12.4 kg
<b>Crash Tested</b>	10g, 22g, 26g	

#### KEY

(W) Width is measured as 'Y' axis in relation to mounting to the track  
 (D) Depth is measured as 'Z' axis in relation to mounting to the track  
 (L) Length is measured as 'X' axis in relation to mounting to the track

## SafePak Pouch Mounts

### Pouch Mount Plate | 2T2

The plate has 4 carriers which provide area for the largest to the smallest pouches in the range.



	IMPERIAL	METRIC
<b>Part Number</b>	0480161	
<b>Dimensions</b>	W 11.7 in D 1.1 in L 16.4 in	W 298 mm D 28.5 mm L 416 mm
<b>Weight</b>	2.8 lb	1.3 kg
<b>Load Capacity</b>	13.7 lb	6.2 kg
<b>Crash Tested</b>	10g, 22g, 26g	

### Pouch Mount Plate | 1T2

Able to be installed in tight areas of the vehicle, this mount plate provides storage in areas that would not usually be used.



	IMPERIAL	METRIC
<b>Part Number</b>	0480162	
<b>Dimensions</b>	W 7.2 in D 1.1 in L 16.4 in	W 183 mm D 28.5 mm L 416 mm
<b>Weight</b>	1.6 lb	0.72 kg
<b>Load Capacity</b>	7.1 lb	3.1 kg
<b>Crash Tested</b>	10g, 22g, 26g	

**KEY**

(W) Width is measured as 'Y' axis in relation to mounting to the track  
 (D) Depth is measured as 'Z' axis in relation to mounting to the track  
 (L) Length is measured as 'X' axis in relation to mounting to the track



## Pouch Mount Plates

### Pouch Mount |

#### Track Adapter - Pouch Mount Plate

The Track Adapter is used to mount Pouch Mount Plates part numbers, 04800160, 0480155, 0480161 and 0480162 to vehicles walls that utilize iN/TRAXX track. The Track Adapter gives flexibility of location and height when configuring your vehicle.



	IMPERIAL	METRIC
<b>Part Number</b>	0480191	
<b>Dimensions</b>	W 7.2 in D 2.1 in L 22.2 in	W 183 mm D 54 mm L 564 mm
<b>Weight</b>	2.7 lb	1.2 kg
<b>Load Capacity</b>	35 lb	16 kg
<b>Crash Tested</b>	10g, 22g, 26g	

- 0480191 Track Adapters sold separately
- Pouch Mount Plates sold separately
- Designed to be mounted in horizontal track only
- Please refer to separate operators manual

#### KEY

(W) Width is measured as 'Y' axis in relation to mounting to the track  
 (D) Depth is measured as 'Z' axis in relation to mounting to the track  
 (L) Length is measured as 'X' axis in relation to mounting to the track

## Defibrillator Mounts

### Defibrillator Mounts | LifePak 15

The LifePak series of mounting solutions provide the user with a secure and adjustable solution on a vertical or horizontal surface of INTRAXX. The multipurpose mount aids in user preference with an option to have both mounts attached to the defibrillator mount should the need arise to move the mount from a horizontal to vertical surface or vice versa.

### Defibrillator Wall Mount |

LifePak 15



	IMPERIAL	METRIC
<b>Part Number</b>	0480013	
<b>Dimensions</b>	W 14 in D 12.6 in L 8.3 in	W 356 mm D 321 mm L 210 mm
<b>Weight</b>	14.8 lb	6.7 kg
<b>Crash Tested</b>	10g, 22g, 26g	

- Compatible with LifePak 15 (with or without case)

### Defibrillator Swivel Mount |

LifePak 15



	IMPERIAL	METRIC
<b>Part Number</b>	0480014	
<b>Dimensions</b>	W 16.3 in D 12 in L 8.3 in	W 415 mm D 304 mm L 210 mm
<b>Weight</b>	16.3 lb	7.4 kg
<b>Crash Tested</b>	10g, 22g, 26g	

- Compatible with LifePak 15 (with or without case)

#### KEY

(W) Width is measured as 'Y' axis in relation to mounting to the track  
 (D) Depth is measured as 'Z' axis in relation to mounting to the track  
 (L) Length is measured as 'X' axis in relation to mounting to the track

## Defibrillator Mounts

### Defibrillator Wall + Swivel Mount |

LifePak 15



	IMPERIAL	METRIC
<b>Part Number</b>	0480015	
<b>Dimensions</b>	W 16.3 in D 13.5 in L 8.3 in	W 415 mm D 344 mm L 210 mm
<b>Weight</b>	18.3 lb	8.3 kg
<b>Crash Tested</b>	10g, 22g, 26g	

- Compatible with LifePak 15 (with or without case)

**KEY**

(W) Width is measured as 'Y' axis in relation to mounting to the track  
 (D) Depth is measured as 'Z' axis in relation to mounting to the track  
 (L) Length is measured as 'X' axis in relation to mounting to the track

## Defibrillator Mounts

### Defibrillator Mounts | Zoll X Series

The Zoll X series of mounting solutions provide the user with a secure and adjustable solution on a vertical or horizontal surface of iNTRAXX. The multipurpose mount aids in user preference with an option to have both mounts attached to the Defibrillator Mount should the need arise to move the mount from a horizontal to vertical surface or vice versa.

### Defibrillator Wall Mount |

Zoll X Series



	IMPERIAL	METRIC
<b>Part Number</b>	0480019	
<b>Dimensions</b>	W 11.1 in D 11.2 in L 8.3 in	W 282 mm D 285 mm L 210 mm
<b>Weight</b>	12.3 lb	5.6 kg
<b>Crash Tested</b>	10g, 22g, 26g	

- Compatible with Zoll X Soft-Case (including rear pouch)

### Defibrillator Swivel Mount |

Zoll X Series



	IMPERIAL	METRIC
<b>Part Number</b>	0480020	
<b>Dimensions</b>	W 13.5 in D 10.4 in L 8.3 in	W 342 mm D 265 mm L 210 mm
<b>Weight</b>	17.4 lb	7.9 kg
<b>Crash Tested</b>	10g, 22g, 26g	

- Compatible with Zoll X Soft-Case (including rear pouch)

#### KEY

(W) Width is measured as 'Y' axis in relation to mounting to the track  
 (D) Depth is measured as 'Z' axis in relation to mounting to the track  
 (L) Length is measured as 'X' axis in relation to mounting to the track

## Defibrillator Mounts

### Defibrillator Wall + Swivel Mount |

Zoll X Series



	IMPERIAL	METRIC
<b>Part Number</b>	0480021	
<b>Dimensions</b>	W 13.5 in D 12 in L 8.3 in	W 342 mm D 305 mm L 210 mm
<b>Weight</b>	19.4 lb	8.8 kg
<b>Crash Tested</b>	10g, 22g, 26g	

- Compatible with Zoll X Soft Case (including rear pouch)

### Defibrillator - Mount | Zoll iNTRAXX Wall Mount (Charging)

The iNTRAXX wall mounted Zoll defibrillator holder is the first of its generation with unparalleled versatility. It is supplied with the easy dock system, charging capability and mounted to iNTRAXX. Fits with the standard Zoll bag to carry accessories.



	IMPERIAL	METRIC
<b>Part Number</b>	0480197	
<b>Dimensions</b>	W 11.8 in D 4 in L 8.2 in	W 300 mm D 100 mm L 210 mm
<b>Weight</b>	8.1 lb	3.7 kg
<b>Load Capacity</b>	26.4 lb	12 kg
<b>Crash Tested</b>	10g, 20g, 26g	
<b>Standards/Certifications</b>	AS/NZS 4535:1999, FMVSS / CAAS, CEN 1789, SAE J3042	

- Supplied as a kit including Zoll mount, Zoll charge adapter, bolts for SafeMount
- Refer to separate operators manual
- SafeMount is sold separately, either 0480010 or 0480146 SafeMounts can be used
- Zoll bag is not included

#### KEY

(W) Width is measured as 'Y' axis in relation to mounting to the track  
 (D) Depth is measured as 'Z' axis in relation to mounting to the track  
 (L) Length is measured as 'X' axis in relation to mounting to the track

## Defibrillator Mounts

### Defibrillator Mounts |

Zoll X **Direct** Wall Mount (Charging)

The Direct Wall Mounted Zoll X defib holder is the first of its generation. Supplied with the easy dock system, charging capability and mounted direct to any vertical surface, never has a mounting system been so versatile. Fits with the standard Zoll bag to carry all your accessories.



	IMPERIAL	METRIC
<b>Part Number</b>	0480217	
<b>Dimensions</b>	W 11.8 in D 4 in L 8.2 in	W 300 mm D 100 mm L 210 mm
<b>Weight</b>	3.9 lb	2.8 kg
<b>Load Capacity</b>	26.4 lb	12 kg
<b>Crash Tested</b>	10g, 22g, 26g	

- Supplied as a kit including Zoll Mount, Zoll charge adapter and bolts
- Refer to separate operators manual
- Zoll bag is not included

**KEY**

(W) Width is measured as 'Y' axis in relation to mounting to the track  
 (D) Depth is measured as 'Z' axis in relation to mounting to the track  
 (L) Length is measured as 'X' axis in relation to mounting to the track



## Defibrillator Mounts

### Defibrillator Mounts | Corpuls 3

The Corpuls 3 series of mounting solutions provide the user with a secure and adjustable solution on a vertical or horizontal surface of IN/TRAXX. The multipurpose mount aids in user preference with an option to have both mounts attached to the defibrillator mount should the need arise to move the mount from a horizontal to vertical surface or vice versa.

Please note all mounts use the Corpuls mounting adapter charging bracket defibrillator/pacer unit 12 V DC obtained separately. There is also a wall mount for the Corpuls Monitor on a telescopic arm.

### Defibrillator Wall Mount |

Corpuls 3



	IMPERIAL	METRIC
<b>Part Number</b>	0480056	
<b>Dimensions</b>	W 7.7 in D 3.9 in L 10.3 in	W 196 mm D 98 mm L 261 mm
<b>Weight</b>	3.5 lb	1.6 kg
<b>Crash Tested</b>	10g, 22g, 26g	

### Defibrillator Swivel Mount |

Corpuls 3



	IMPERIAL	METRIC
<b>Part Number</b>	0480094	
<b>Dimensions</b>	W 10.3 in D 9.8 in L 10.3 in	W 261 mm D 250 mm L 262 mm
<b>Weight</b>	4.9 lb	2.2 kg
<b>Crash Tested</b>	10g, 22g, 26g	

**KEY**

(W) Width is measured as 'Y' axis in relation to mounting to the track

(D) Depth is measured as 'Z' axis in relation to mounting to the track

(L) Length is measured as 'X' axis in relation to mounting to the track

## Defibrillator Mounts

### Defibrillator Wall + Swivel Mount | Corpuls 3



	IMPERIAL	METRIC
<b>Part Number</b>	0480095	
<b>Dimensions</b>	W 10.3 in D 10.5 in L 10.3 in	W 261 mm D 266 mm L 262 mm
<b>Weight</b>	7.6 lb	3.4 kg
<b>Crash Tested</b>	10g, 22g, 26g	

### Defibrillator Wall Mount | Corpuls Monitor



	IMPERIAL	METRIC
<b>Part Number</b>	0480093	
<b>Dimensions</b>	W 7.8 in D 3.9 in L 6.6 in	W 199 mm D 98 mm L 167 mm
<b>Weight</b>	2.9 lb	1.3 kg
<b>Crash Tested</b>	10g, 22g, 26g	

**KEY**

(W) Width is measured as 'Y' axis in relation to mounting to the track  
 (D) Depth is measured as 'Z' axis in relation to mounting to the track  
 (L) Length is measured as 'X' axis in relation to mounting to the track

## Defibrillator Mounts

### Defibrillator Wall Mount |

Physio LP1000 AED

Specifically built for the Physio LP1000, this wall mount provides mounting solutions for the defibrillator into the iN/TRAXX.



	IMPERIAL	METRIC
<b>Part Number</b>	0480084	
<b>Dimensions</b>	W 7.7 in D 2.4 in L 10 in	W 196 mm D 62 mm L 253 mm
<b>Weight</b>	3.1 lb	1.4 kg
<b>Crash Tested</b>	10g, 22g, 26g	

### Defibrillator Wall Mount |

ProPaq PD360

This wall mount provides the platform for installation of the Zoll or Hamilton T1 or any other aviation products that use the D360 system. Zoll adapter to fit the PD360 defibrillator. See #0480156 for adapter.



	IMPERIAL	METRIC
<b>Part Number</b>	0480151	
<b>Dimensions</b>	W 5.9 in D 15.1 in L 6.6 in	W 151 mm D 384 mm L 167 mm
<b>Weight</b>	4 lb	1.8 kg
<b>Crash Tested</b>	10g	

• Pictured with #0480156 Zoll adapter. Sold separately

**KEY**

(W) Width is measured as 'Y' axis in relation to mounting to the track  
 (D) Depth is measured as 'Z' axis in relation to mounting to the track  
 (L) Length is measured as 'X' axis in relation to mounting to the track

## Defibrillator Mounts

### Defibrillator Counter Top Mount | D360

The D360 base is designed to be an all purpose mount. In order to use the D360 base with your equipment, you must purchase an equipment specific adapter (sold separately).



	IMPERIAL	METRIC
<b>Part Number</b>	0480184	
<b>Dimensions</b>	W 7.6 in D 1.45 in L 7.2 in	W 195 mm D 37 mm L 185 mm
<b>Weight</b>	1.9 lb	0.89 kg
<b>Crash Tested</b>	10g, 20g	

- Must be used in conjunction with Ferno D30d equipment Specific adapters, sold separately
- Review users manual

### Adapter | D360 ProPac/ZOLL

The adapter provides the interface between the mount and the defibrillator.



	IMPERIAL	METRIC
<b>Part Number</b>	0480156	
<b>Dimensions</b>	W 1.6 in D 4.5 in L 7.1 in	W 41 mm D 114 mm L 180 mm
<b>Weight</b>	3.7 lb	1.7 kg
<b>Crash Tested</b>	10g, 22g	

- Compatible with D360 ProPac. Sold separately

**KEY**

(W) Width is measured as 'Y' axis in relation to mounting to the track  
 (D) Depth is measured as 'Z' axis in relation to mounting to the track  
 (L) Length is measured as 'X' axis in relation to mounting to the track

## Defibrillator Mounts

### Defibrillator Counter Top Mount | D360 Zoll Mount Kit

The D360 Zoll/ProPac Complete Mount Kit is designed to secure the defibrillator with the ability to swivel 360 degrees.



	IMPERIAL	METRIC
<b>Part Number</b>	0480185	
<b>Dimensions</b>	W 7.6 in D 2.3 in L 7.2 in	W 195 mm D 60 mm L 185 mm
<b>Weight</b>	2.8 lb	1.3 kg
<b>Crash Tested</b>	10g, 20g	

- Must be used in conjunction with Ferno D360 equipment specific adapter
- Refer to users manual
- Supplied with all the fittings required
- Defibrillator sold separately

**KEY**

(W) Width is measured as 'Y' axis in relation to mounting to the track  
 (D) Depth is measured as 'Z' axis in relation to mounting to the track  
 (L) Length is measured as 'X' axis in relation to mounting to the track

## Defibrillator Mounts

### Defibrillator Wall Mount |

#### Tempus LS Kit

The Tempus LS wall mount kit provides the solution to fix the Tempus to iN/TRAXX, the LS smart Dock #01-3012 is not included. The kit comprises of one SafeMount, one spacer plate and four fixing set screws.



	IMPERIAL	METRIC
<b>Part Number</b>	0480180	
<b>Dimensions</b>	W 6.4 in D 6.4 in L 7.6 in	W 165 mm D 165 mm L 185 mm
<b>Weight</b>	1.6 lb	0.73 kg
<b>Crash Tested</b>	10g, 20g, 26g	

- Tempus LS Smart Dock #01-3012 sold separately
- Follow instructions on assembly process
- Refer to Tempus specifications of LS Smart Dock and testing certifications

### Defibrillator Wall Mount |

#### Tempus PRO Kit

The Tempus PRO wall mount kit provides the solution to fix the Tempus to iN/TRAXX, the PRO Smart Dock #01-2244 is not included. The kit comprises of one SafeMount and four fixing set screws.



	IMPERIAL	METRIC
<b>Part Number</b>	0480181	
<b>Dimensions</b>	W 5.9 in D 6.7 in L 12.2 in	W 151 mm D 171 mm L 310 mm
<b>Weight</b>	1.3 lb	6.1 kg
<b>Crash Tested</b>	10g, 20g, 26g	

- Tempus PRO Smart Dock sold separately
- Follow instructions on assembly process
- Refer to Tempus specifications of PRO Smart Dock and testing certifications

**KEY**

(W) Width is measured as 'Y' axis in relation to mounting to the track  
 (D) Depth is measured as 'Z' axis in relation to mounting to the track  
 (L) Length is measured as 'X' axis in relation to mounting to the track



## Defibrillator Mounts

### Defibrillator - Mount |

#### Tempus PRO 360 Swivel Mount

The iNTRAXX 360 degrees swivel mount securely mounts the Tempus PRO and Tempus LS individually or together back to back and is suitable for cabinet mounting. The iNTRAXX system utilizes the Philips powered docs (sold separately).



	IMPERIAL	METRIC
<b>Part Number</b>	0480182	
<b>Dimensions</b>	W 8.1 in D 11.4 in L 6.5 in	W 205 mm D 290 mm L 165 mm
<b>Weight</b>	5.3 lb	2.4 kg
<b>Load Capacity</b>	19.8 lb	9 kg
<b>Crash Tested</b>	10g, 20g, 26g	

- Mount is supplied as a kit including required bolts
- iNTRAXX track is sold separately, select your preference to your application
- For details on Philips Powered docking stations please contact your Philips representative - Sold separately
- Ferno is not responsible of testing claims of OEM mounts

### Defibrillator - Mount |

#### Tempus LS Stacked Adapter

This adapter is used in conjunction with iNTRAXX part number 0480182 bench mount which allows for "double" stacking of the Tempus LS above the Tempus Pro. The iNTRAXX system utilizes the Philips powered docs (sold separately).



	IMPERIAL	METRIC
<b>Part Number</b>	0480183	
<b>Dimensions</b>	W 15.6 in D 5.5 in L 4 in	W 395 mm D 140 mm L 100 mm
<b>Weight</b>	1.3 lb	0.6 kg
<b>Load Capacity</b>	6.6 lb	3 kg
<b>Crash Tested</b>	10g, 20g, 26g	

- Mount is supplied as a kit including required bolts
- For details on Philips Powered docking stations please contact your Philips representative - Sold separately
- Ferno is not responsible of testing claims of OEM mounts

#### KEY

(W) Width is measured as 'Y' axis in relation to mounting to the track  
 (D) Depth is measured as 'Z' axis in relation to mounting to the track  
 (L) Length is measured as 'X' axis in relation to mounting to the track

## Defibrillator Mounts

### Defibrillator - Mount |

#### Tempus Mounting Kit Only

The Tempus mounting kit gives you multiple mounting options for the Tempus Pro or LS. Options include the iN/TRAXX SafeMounts, swivel mounts, SafeConnect mounts, aviation pole clamp, aviation ProV adapter or aviation D360 mounts. All mounting solutions use the Philips Docking devices (sold separately).



	IMPERIAL	METRIC
<b>Part Number</b>	0480218	
<b>Dimensions</b>	W 6.3 in D 5.1 in L 4 in	W 160 mm D 130 mm L 100 mm
<b>Weight</b>	1.4 lb	0.65 kg
<b>Load Capacity</b>	19.8 lb	9 kg
<b>Crash Tested</b>	10g, 20g, 26g	

- Mount is supplied as a kit including required bolts
- Schiller Powered mounts are sold separately from Schiller
- Ferno is not responsible of testing claims of OEM mounts

#### KEY

(W) Width is measured as 'Y' axis in relation to mounting to the track  
 (D) Depth is measured as 'Z' axis in relation to mounting to the track  
 (L) Length is measured as 'X' axis in relation to mounting to the track

## Defibrillator Mounts

### Defibrillator - Mount |

#### Zoll AED3 iNTRAXX

The Zoll AED3 mount is for iNTRAXX wall track mounting. Can mount into vertical or horizontal track. Zoll AED3 can be locked into this mount with or without its protective carry case.



	IMPERIAL	METRIC
<b>Part Number</b>	0480149	
<b>Dimensions</b>	W 12.2 in D 9 in L 10.2 in	W 312 mm D 229 mm L 260 mm
<b>Weight</b>	5.7 lb	2.6 kg
<b>Load Capacity</b>	7.7 lb	3.5 kg
<b>Crash Tested</b>	10g, 20g, 26g	

- Can be retained in the mount with or without the Zoll AED Case
- iNTRAXX track mount only
- Can be supplied as a Cabinet Mount 360 degree on special request
- Refer to separate customer drawings for mounting details
- Defibrillator not included

### Defibrillator - Mount |

#### Zoll AED 3 Direct Mount

The Zoll AED3 mount is a direct to wall mounting. No track required. Zoll AED3 can be locked into this mount with or without its protective carry case.



	IMPERIAL	METRIC
<b>Part Number</b>	0480150	
<b>Dimensions</b>	W 12.2 in D 7.5 in L 10.2 in	W 312 mm D 191 mm L 260 mm
<b>Weight</b>	4.1 lb	1.9 kg
<b>Load Capacity</b>	7.7 lb	3.5 kg
<b>Crash Tested</b>	10g, 20g, 26g	

- Can be retained in the mount with or without the Zoll AED Case
- Direct to wall mount only
- Can be supplied as a Cabinet Mount 360 degree on special request
- Refer to separate customer drawings for mounting details
- Defibrillator not included

#### KEY

(W) Width is measured as 'Y' axis in relation to mounting to the track  
 (D) Depth is measured as 'Z' axis in relation to mounting to the track  
 (L) Length is measured as 'X' axis in relation to mounting to the track

## Defibrillator Mounts

### Defibrillator - Mount |

#### Zoll AED Plus Adaptor Kit

The Zoll AED Plus Adaptor Kit transforms your existing Zoll AED3 mount part numbers 0480149 & 0480150 to take multiple styles of AED's



	IMPERIAL	METRIC
<b>Part Number</b>	0480239	
<b>Dimensions</b>	W 10 in D 2.4 in L 8.7 in	W 255 mm D 60 mm L 220 mm
<b>Weight</b>	0.97 lb	0.44 kg
<b>Crash Tested</b>	10g, 20g, 26g	

- Sold separately
- Supplied complete with bolts and spacers
- Weight is not inclusive of mount fitted too
- Please refer to separate operators manual and assembly instructions
- Ferno is not responsible of testing claims of OEM mounts
- Certification falls under the compliance of the original device mount

### Defibrillator - Mount |

#### AED Mount Wall iNTRAXX

The AED mount is for iNTRAXX wall track mounting. Can mount into vertical or horizontal track. The AED can be locked into this mount with or without its protective carry case.



	IMPERIAL	METRIC
<b>Part Number</b>	0480241	
<b>Dimensions</b>	W 10.2 in D 9 in L 14.4 in	W 260 mm D 229 mm L 367 mm
<b>Weight</b>	6.9 lb	3.1 kg
<b>Load Capacity</b>	7.7 lb	3.5 kg
<b>Crash Tested</b>	10g, 20g, 26g	

- Supplied complete with bolts and spacers to suit each AED
- Can be retained in the mount with or without the AED Case always refer to instructions
- iNTRAXX wall mount only
- Refer to separate customer drawings for mounting details
- Defibrillator not included
- Please refer to separate operators manual
- Ferno is not responsible of testing claims of OEM mounts
- Currently known devices, Zoll AED plus & Mindray BeneHeart D1

#### KEY

(W) Width is measured as 'Y' axis in relation to mounting to the track  
 (D) Depth is measured as 'Z' axis in relation to mounting to the track  
 (L) Length is measured as 'X' axis in relation to mounting to the track

## Defibrillator Mounts

### Defibrillator - Mount |

#### AED Mount Bolt On

The AED wall mount is a direct to wall mounting. No track required. Listed AED's can be locked into this mount with or without is protective carry case in most cases.



	IMPERIAL	METRIC
<b>Part Number</b>	0480242	
<b>Dimensions</b>	W 10.2 in D 7.5 in L 13.8 in	W 260 mm D 191 mm L 350 mm
<b>Weight</b>	5.3 lb	2.4 kg
<b>Load Capacity</b>	7.7 lb	3.5 kg
<b>Crash Tested</b>	10g, 20g, 26g	

- Supplied complete with bolts and spacers to suit each AED
- Can be retained in the mount with or without the AED Case. Always refer to instructions
- Direct to wall mount only
- Can be supplied as a Cabinet Mount 360 degree on special request
- Refer to separate customer drawings for mounting details
- Defibrillator not included
- Please refer to separate operators manual
- Ferno is not responsible of testing claims of OEM mounts
- Current known devices, Zoll AED plus & Mindray BeneHeart D1

### Defibrillator - Mount |

#### 360° Swivel with Rear Vertical Holder

Perfect for mounting vertical plates to attach devices or other products. Compatible with Ferno PacRacs, iN/TRAXX bench track, rotational through 360° with multiple lock locations.



	IMPERIAL	METRIC
<b>Part Number</b>	0480237	
<b>Dimensions</b>	W 5 in D 11.6 in L 6.7 in	W 125 mm D 291 mm L 167 mm
<b>Weight</b>	18.1 lb	8.2 kg
<b>Load Capacity</b>	55 lb	25 kg
<b>Crash Tested</b>	10g, 20g, 26g	

#### KEY

- (W) Width is measured as 'Y' axis in relation to mounting to the track
- (D) Depth is measured as 'Z' axis in relation to mounting to the track
- (L) Length is measured as 'X' axis in relation to mounting to the track

## Defibrillator Mounts

### ACC - Mount | Safe Mount to Aviation D360 Adapter Plate

The Safemount to Aviation D360 Adapter Plate allows the D360 to be relocatable on iN/TRAXX track. Once the adapter is used to mount the D360 to a SafeMount it can be bench or PacRac mounted.



	IMPERIAL	METRIC
<b>Part Number</b>	0480198	
<b>Dimensions</b>	W 5.9 in D 0.31 in L 7.5 in	W 151 mm D 8 mm L 193 mm
<b>Weight</b>	0.4 lb	0.19 kg
<b>Crash Tested</b>	10g, 20g, 26g	

- Plate is supplied as a kit including bolts
- Safemount and D360 not included
- Safemount and D360 are sold separately
- Refer to separate operators manual for details
- Certification falls under the compliance of the SafeMount and Aviation D360 components

### Defibrillator - Mount |

G2 Schiller Defiguard Touch 7

The New iN/TRAXX G2 Schiller Defiguard Touch 7 wall mount adapts the Schiller standard and slim ambulance bracket with either the DC/DC or AC/DC chargers. Chargers are not included with this mount.



	IMPERIAL	METRIC
<b>Part Number</b>	0480224	
<b>Dimensions</b>	W 7.6 in D 2.2 in L 8 in	W 192 mm D 56 mm L 204 mm
<b>Weight</b>	16.9 lb	7.7 kg
<b>Load Capacity</b>	55 lb	25 kg
<b>Crash Tested</b>	10g, 20g, 26g	

- Mount is supplied as a kit including SafeMount and required bolts
- Schiller Powered mounts are sold separately from Schiller
- Ferno is not responsible of testing claims of OEM mounts

#### KEY

(W) Width is measured as 'Y' axis in relation to mounting to the track  
 (D) Depth is measured as 'Z' axis in relation to mounting to the track  
 (L) Length is measured as 'X' axis in relation to mounting to the track



**Oxygen Mount |**

**CD O2 Single Cylinder Mount**

The CD O2 Single Cylinder Mount is unique in its design as it can be mounted to the iN/TRAXX to carry a single cylinder or optioned up to carry 2 or 3 cylinders.



	IMPERIAL	METRIC
<b>Part Number</b>	0480163	
<b>Dimensions</b>	W 19.7 in D 5.1 in L 6.6 in	W 500 mm D 130 mm L 167 mm
<b>Weight</b>	6 lb	2.7 kg
<b>Crash Tested</b>	10g, 22g, 26g	

- Weight does not include oxygen cylinders
- Mount is compatible with Euro size "C" oxygen bottle, Inhalo oxygen bottle or US Jumbo "D" sold separately
- Please refer to separate operators manual

**Oxygen Mount |**

**CD O2 Mount Bracket Only**

The CD O2 Mount bracket is sold separately. Single sale allows the ability to build your system. Certification is covered only under the complete assembly. Please refer to the user manual.



	IMPERIAL	METRIC
<b>Part Number</b>	0480127	
<b>Dimensions</b>	W 19.7 in D 5.6 in L 0.39in	W 500 mm D 142 mm L 10 mm
<b>Weight</b>	2.2 lb	1 kg
<b>Crash Tested</b>	10g, 22g, 26g	

- Please refer to separate operators manual

**KEY**

(W) Width is measured as 'Y' axis in relation to mounting to the track  
 (D) Depth is measured as 'Z' axis in relation to mounting to the track  
 (L) Length is measured as 'X' axis in relation to mounting to the track

Oxygen

**Oxygen Mount |**

CD O2 Cylinder Bracket Only

The CD O2 Mount bracket is sold separately. Single sale allows the ability to build your system. Certification is covered only under the complete assembly.



	IMPERIAL	METRIC
<b>Part Number</b>	0480128	
<b>Dimensions</b>	W 19.7 in D 5.6 in L 0.39 in	W 500 mm D 142 mm L 10 mm
<b>Weight</b>	2.2 lb	1 kg
<b>Crash Tested</b>	10g, 22g, 26g	

- Weight does not include oxygen cylinder
- Mount is compatible with Euro size "C" oxygen bottle, Inhalo oxygen bottle or US Jumbo "D" sold separately
- Please refer to separate operators manual

**Oxygen Mount | Single**

The Single Oxygen Mount is designed to support a D or Jumbo D size oxygen bottle.



	IMPERIAL	METRIC
<b>Part Number</b>	0480034 <i>(While Supplies Last)</i>	
<b>Dimensions</b>	W 18.9 in D 8.3 in L 6.6 in	W 480 mm D 210 mm L 167 mm
<b>Weight</b>	4 lb	2.2 kg
<b>Crash Tested</b>	10g, 22g, 26g	

- Weight does not include oxygen cylinder.
- Compatible with "D" or Jumbo "D" tanks. Sold separately.

**KEY**

(W) Width is measured as 'Y' axis in relation to mounting to the track  
 (D) Depth is measured as 'Z' axis in relation to mounting to the track  
 (L) Length is measured as 'X' axis in relation to mounting to the track

**Oxygen Mount** | Double

The Double Oxygen System is designed to hold up to two M60 oxygen cylinders and extends the time between refills or provision of oxygen to multiple patients. Can be easily removed from the iN/TRAXX for use outside of the vehicle.



	IMPERIAL	METRIC
--	----------	--------

**Part Number**

048-0126 | #T70710, iN/TRAXX Oxygen System  
 048-0158 | #T70710-T, iN/TRAXX Oxy System - w/Pres

**Dimensions**

W	34.5 in	W	876 mm
D	8.9 in	D	226 mm
L	17.8 in	L	451 mm

**Weight**

	34 lb		15.4 kg
--	-------	--	---------

**Crash Tested**

10g, 22g, 26g

- Weight does not include oxygen cylinders
- Compatible with:
  - Spiracle EE-Lite tanks (#0819994) combined with Model 804 Regulator (#0819567)
  - Spiracle M60 Aluminum Tank (#0822502)
- Oxygen cylinders sold separately

**KEY**

(W) Width is measured as 'Y' axis in relation to mounting to the track  
 (D) Depth is measured as 'Z' axis in relation to mounting to the track  
 (L) Length is measured as 'X' axis in relation to mounting to the track

## Ventilator Mounts

### Ventilator Mount | Impact 731

Used to mount an Impact 731 ventilator to a SafeMount with connector.



	IMPERIAL	METRIC
<b>Part Number</b>	0480038	
<b>Dimensions</b>	W 7.8 in D 2.5 in L 6.6 in	W 199 mm D 64 mm L 167 mm
<b>Weight</b>	2 lb	0.9 kg
<b>Crash Tested</b>	10g, 22g, 26g	

• Also compatible with Zoll Z Ventilator.

### Ventilator Mount |

#### Hamilton T1 Wall Mount Bracket

The new iN/TRAXX Hamilton T1 wall mount bracket adapts the Hamilton supplied device mounts to the iN/TRAXX wall. The bracket can also accept the aviation D360 bench mount which allows most D360 devices to be mounted on iN/TRAXX wall. Please refer to customer drawing as all parts sold separately.



	IMPERIAL	METRIC
<b>Part Number</b>	0480139	
<b>Dimensions</b>	W 9.5 in D 4 in L 8.3 in	W 242 mm D 100 mm L 210 mm
<b>Weight</b>	1.1 lb	0.5 kg
<b>Crash Tested</b>	10g, 22g, 26g	

- Mount is supplied as a kit including required bolts
- Hamilton mounts sold separately from Schiller
- Safemount to be orderd separately
- Ferno is not responsible of testing claims of OEM mounts

#### KEY

(W) Width is measured as 'Y' axis in relation to mounting to the track  
 (D) Depth is measured as 'Z' axis in relation to mounting to the track  
 (L) Length is measured as 'X' axis in relation to mounting to the track

## Ventilator Mounts

### Ventilator Mounts |

#### D360 Hamilton Mount Kit

The D360 Hamilton Mount Kit is designed to secure the ventilator and the ability to swivel it 360 degrees.



	IMPERIAL	METRIC
<b>Part Number</b>	0480186	
<b>Dimensions</b>	W 8.2 in D 12.8 in L 7.7 in	W 209.5 mm D 327 mm L 197 mm
<b>Weight</b>	3.5 lb	1.5 kg
<b>Crash Tested</b>	10g, 22g	

- Must be used in conjunction with Ferno D360 equipment specific adapter
- Refer to users manual
- Supplied with all the fittings required
- Defibrillator sold separately

### Ventilator Mounts |

#### D360 Hamilton Adapter

The D360 Hamilton Adapter is designed to secure the ventilator as well as giving the ability to swivel it 360 degrees. This part operates with the 0480184 or the 0480151 D360 mounts.



	IMPERIAL	METRIC
<b>Part Number</b>	0480187	
<b>Dimensions</b>	W 8.2 in D 10.5 in L 7.7 in	W 209.5 mm D 266.7 mm L 197 mm
<b>Weight</b>	1.4 lb	0.68 kg
<b>Crash Tested</b>	10g, 22g	

- Must be used in conjunction with Ferno D360 equipment specific mount
- Refer to users manual
- Supplied with all the fittings required
- Defibrillator sold separately

**KEY**

(W) Width is measured as 'Y' axis in relation to mounting to the track  
 (D) Depth is measured as 'Z' axis in relation to mounting to the track  
 (L) Length is measured as 'X' axis in relation to mounting to the track

## Ventilator Mounts

### Mounting Plate | Pneupac

Specifically designed to mount the PneuPac Ventilator.



	IMPERIAL	METRIC
<b>Part Number</b>	0480074	
<b>Dimensions</b>	W 7.8 in D 2.4 in L 6.6 in	W 199 mm D 60 mm L 167 mm
<b>Weight</b>	2.4 lb	1.1 kg
<b>Crash Tested</b>	10g, 22g, 26g	

### Ventilator Mount | Weinmann Lifebase 3NG

Fits the Weinmann wall mounting Base Station 3 NG only.



	IMPERIAL	METRIC
<b>Part Number</b>	0480159	
<b>Dimensions</b>	W 11 in D 15.9 in L 2.2 in	W 280 mm D 404 mm L 56 mm
<b>Weight</b>	4.8 lb	2.2 kg
<b>Crash Tested</b>	10g, 20g, 26g	

• Weinmann Base Station 3 NG fitting instructions must be followed

#### KEY

(W) Width is measured as 'Y' axis in relation to mounting to the track  
 (D) Depth is measured as 'Z' axis in relation to mounting to the track  
 (L) Length is measured as 'X' axis in relation to mounting to the track

## Ventilator Mounts

### Ventilator Mounts | Draeger

The Draeger ventilator can be attached to either a swivel mount or wall mount and designed specifically for the Draeger.

#### Wall Ventilator Mount |

Draeger



	IMPERIAL	METRIC
<b>Part Number</b>	0480109	
<b>Dimensions</b>	W 11.2 in D 10.2 in L 9.5 in	W 285 mm D 259 mm L 243 mm
<b>Weight</b>	6.9 lb	3.1 kg
<b>Crash Tested</b>	10g, 22g, 26g	

#### Swivel Ventilator Mount |

Draeger



	IMPERIAL	METRIC
<b>Part Number</b>	0480110	
<b>Dimensions</b>	W 13.8 in D 9.9 in L 9.6 in	W 351 mm D 251 mm L 243 mm
<b>Weight</b>	8.7 lb	3.9 kg
<b>Crash Tested</b>	10g, 22g, 26g	

**KEY**

(W) Width is measured as 'Y' axis in relation to mounting to the track

(D) Depth is measured as 'Z' axis in relation to mounting to the track

(L) Length is measured as 'X' axis in relation to mounting to the track

## Suction Mounts

### Suction Unit Mount | Laerdal

Fits the Laerdal Suction Unit and requires the LSU wall bracket.



	IMPERIAL	METRIC
<b>Part Number</b>	0480042	
<b>Dimensions</b>	W 6.8 in D 2.2 in L 7.5 in	W 173 mm D 57 mm L 190 mm
<b>Weight</b>	2.6 lb	1.2 kg
<b>Load Capacity</b>	27.6 lb	12.5 kg
<b>Crash Tested</b>	10g, 22g, 26g	

- Requires LSU Wall Bracket (with or without power cord).

### Suction Unit Mount | Laerdal LCSU4

The New iN/TRAXX Laerdal LCSU4 can be wall mounted or bench mounted using the same kit. The kit encompasses the blue wired Laerdal LCSU standard frame either with or without the larger canister. The 0480048 kit comes with everything you require including the SafeMount.



	IMPERIAL	METRIC
<b>Part Number</b>	0480048	
<b>Dimensions</b>	W 10 in D 10 in L 6.9 in	W 255 mm D 254 mm L 176 mm
<b>Weight</b>	8 lb	3.6 kg
<b>Crash Tested</b>	10g, 22g, 26g	

- Mount is supplied as a kit including SafeMount and required bolts
- Laerdal LCSU4 is sold separately from Laerdal
- Follow iN/TRAXX instructions on assembly

**KEY**

(W) Width is measured as 'Y' axis in relation to mounting to the track  
 (D) Depth is measured as 'Z' axis in relation to mounting to the track  
 (L) Length is measured as 'X' axis in relation to mounting to the track



## Suction Mounts

### Suction Unit Mount | SSCOR

Fits the SSCOR Suction Unit only.



	IMPERIAL	METRIC
<b>Part Number</b>	0480043	
<b>Dimensions</b>	W 5.9 in D 2.4 in L 7.9 in	W 151 mm D 60 mm L 200 mm
<b>Weight</b>	2.6 lb	1.2 kg
<b>Crash Tested</b>	10g, 22g, 26g	

### Suction Mount | Combo Adapter Mount

Combo adapter plate is able to mount the following equipment and comes complete with the bolts in each kit. Mounts:

- MeduMat Ventilator
- Weinmann Suction Unit
- Weinmann Base 1NG Suction Unit



	IMPERIAL	METRIC
<b>Part Number</b>	0480199	
<b>Dimensions</b>	W 6.4 in D 2.2 in L 6.6 in	W 163 mm D 57 mm L 167 mm
<b>Weight</b>	2.8 lb	1.25 kg
<b>Crash Tested</b>	10g, 22g, 26g	
<b>Standards/ Certifications</b>	AS/NZS 4535:1999, FMVSS / CAAS, CEN 1789, SAE J3042	

- Comes complete with Safe Mount
- Please follow fitment instructions
- Device mountings sold separately

**KEY**

(W) Width is measured as 'Y' axis in relation to mounting to the track  
 (D) Depth is measured as 'Z' axis in relation to mounting to the track  
 (L) Length is measured as 'X' axis in relation to mounting to the track

## Suction Mounts

### Suction Unit Mount |

SAM e.p.s (MGE)

This adapter bracket attaches the SAM e.p.s. wall bracket to the iN/TRAXX system via a SafeMount 0480146. The pack for the SAM's suction unit contains the adapter plate and necessary hardware.



	IMPERIAL	METRIC
<b>Part Number</b>	0480169	
<b>Dimensions</b>	W 5.1 in D 0.39 in L 9.7 in	W 130 mm D 10 mm L 247 mm
<b>Weight</b>	6 lb	2.7 kg
<b>Load Capacity</b>	0.8 lb	0.4 kg
<b>Crash Tested</b>	10g, 20g, 26g	

- Adapter can only be used in conjunction with the 0480146 SafeMount
- Refer to separate operators manual
- SafeMount not included
- SafeMount sold separately

### Suction Unit Mount |

Hersill V7 Plus B Emergency

Fits the Hersill V7 + B Emergency



	IMPERIAL	METRIC
<b>Part Number</b>	0480124	
<b>Dimensions</b>	W 5.9 in D 1.9 in L 6.6 in	W 151 mm D 48 mm L 167 mm
<b>Weight</b>	2.3 lb	1.1 kg
<b>Load Capacity</b>	0.8 lb	0.4 kg
<b>Crash Tested</b>	10g, 20g, 26g	

- The 0480124 comes complete with Safemount.
- The follow fitment instructions
- Device mountings sold separately

**KEY**

(W) Width is measured as 'Y' axis in relation to mounting to the track  
 (D) Depth is measured as 'Z' axis in relation to mounting to the track  
 (L) Length is measured as 'X' axis in relation to mounting to the track

## Suction Mounts

### Suction Unit Mount | Askir

The New iNTRAXX Askir Suction mount 0480223 is a direct wall mount. By adding other iNTRAXX mounting solutions, the 0480223 can then be mounted to iNTRAXX by either wall, bench or swivel.



	IMPERIAL	METRIC
<b>Part Number</b>	0480223	
<b>Dimensions</b>	W 10.4 in D 7.9 in L 4.1 in	W 265 mm D 200 mm L 105 mm
<b>Weight</b>	1.6 lb	0.73 kg
<b>Load Capacity</b>	8.8 lb	4 kg
<b>Crash Tested</b>	10g, 22g, 26g	

- iNTRAXX wall mount only
  - Refer to separate customer drawings for mounting details
  - Please refer to separate operators manual
- Mount accepts:
- CA MI Askir 30 Suction Pump
  - CA-MI Askir 36BR Suction Pump

### Suction Mount | Askir iNTRAXX Mount

The New iNTRAXX Askir Suction mount 0480233 is an intraxx wall mount. By adding other iNTRAXX mounting solutions the 0480233 can then be mounted to iNTRAXX by either wall, bench or swivel.



	IMPERIAL	METRIC
<b>Part Number</b>	0480233	
<b>Dimensions</b>	W 10.4 in D 9.1 in L 6.1 in	W 265 mm D 230 mm L 155 mm
<b>Weight</b>	3.3 lb	1.5 kg
<b>Load Capacity</b>	8.8 lb	4 kg
<b>Crash Tested</b>	10g, 22g, 26g	
<b>Standards/ Certifications</b>	AS/NZS 4535:1999, FMVSS / CAAS, CEN 1789, SAE J3042	

- iNTRAXX mount only
  - Refer to separate customer drawings for mounting details
  - Please refer to separate operators manual
- Mount accepts:
- CA MI Askir 30 Suction Pump
  - CA-MI Askir 36BR Suction Pump

#### KEY

(W) Width is measured as 'Y' axis in relation to mounting to the track  
 (D) Depth is measured as 'Z' axis in relation to mounting to the track  
 (L) Length is measured as 'X' axis in relation to mounting to the track

## Pole & Rail Mounts

### Pole Mounts

The Single, Double and Vertical Pole mounts provide an ergonomic solution for mounting devices that have a clamp attachment fitting. The Safe Working Load (SWL) of the Pole/Medrail is the SWL of the SafeMount.

#### Pole Mount | Single



	IMPERIAL	METRIC
<b>Part Number</b>	0480080	
<b>Dimensions</b>	W 8.1 in D 5.5 in L 6.6 in	W 206 mm D 140 mm L 167 mm
<b>Weight</b>	3.6 lb	1.62 kg
<b>Crash Tested</b>	10g, 22g, 26g	

#### Pole Mount | Double



	IMPERIAL	METRIC
<b>Part Number</b>	0480081	
<b>Dimensions</b>	W 12.6 in D 4.1 in L 6.6 in	W 320 mm D 103 mm L 167 mm
<b>Weight</b>	3.7 lb	1.7 kg
<b>Crash Tested</b>	10g, 22g, 26g	

#### Pole Mount | Vertical



	IMPERIAL	METRIC
<b>Part Number</b>	0480112	
<b>Dimensions</b>	W 5.9 in D 10 in L 6.6 in	W 151 mm D 255 mm L 167 mm
<b>Weight</b>	2.8 lb	1.29 kg
<b>Crash Tested</b>	10g, 22g, 26g	

**KEY**

(W) Width is measured as 'Y' axis in relation to mounting to the track  
 (D) Depth is measured as 'Z' axis in relation to mounting to the track  
 (L) Length is measured as 'X' axis in relation to mounting to the track

Pole & Rail Mounts

**Medrail**

Similar to the Pole Mounts the Medrail supports equipment already equipped with a Medrail style mount in either the 25 or 30mm rail size. The SWL of the Pole/Medrail is the SWL of the SafeMount.

**Medrail Mount | 25mm**



	IMPERIAL	METRIC
<b>Part Number</b>	0480082	
<b>Dimensions</b>	W 5.9 in D 3.2 in L 12 in	W 151 mm D 81 mm L 305 mm
<b>Weight</b>	3.1 lb	1.4 kg
<b>Crash Tested</b>	10g, 22g, 26g	

**Medrail Mount | 30mm**



	IMPERIAL	METRIC
<b>Part Number</b>	0480091	
<b>Dimensions</b>	W 5.9 in D 3.2 in L 12 in	W 151 mm D 81 mm L 305 mm
<b>Weight</b>	3.2 lb	1.44 kg
<b>Crash Tested</b>	10g, 22g, 26g	

**KEY**

(W) Width is measured as 'Y' axis in relation to mounting to the track  
 (D) Depth is measured as 'Z' axis in relation to mounting to the track  
 (L) Length is measured as 'X' axis in relation to mounting to the track

Accessory Mounts

**CPR Mount**

The new iN/TRAXX CPR mount is a versatile wall mount that can be adjusted to fit different CPR devices that are in their bags/cases. Currently fits Lucas, Corpuls, and LifeLine ARM XR CPR devices.



	IMPERIAL	METRIC
<b>Part Number</b>	0480038	
<b>Dimensions</b>	W 22.9-24.3 in D 12.6 in L 20.7 in	W 582-616 mm D 320 mm L 526 mm
<b>Weight</b>	7 lb	3.2 kg
<b>Load Capacity</b>	26.5 lb	12 kg
<b>Crash Tested</b>	10g, 20g, 26g	

- iN/TRAXX mount only
- Refer to separate customer drawings for mounting details
- Please refer to separate operators manual

Mount accepts:

- Corpuls CPR in storage case
- LUCAS 3 in storage case
- Defibtech LifeLine ARM XR in storage case

**KEY**

(W) Width is measured as 'Y' axis in relation to mounting to the track

(D) Depth is measured as 'Z' axis in relation to mounting to the track

(L) Length is measured as 'X' axis in relation to mounting to the track

## Accessory Mounts

### Litter Arm | Multipurpose

The litter arms, when used as a pair, provide a compact solution to supporting a variety of products including Ferno and Junkin Litters. Litter arm is sold individually.



	IMPERIAL	METRIC
<b>Part Number</b>	0480036	
<b>Dimensions</b>	W 7.2 in D 28.7 in L 6.6 in	W 182 mm D 730 mm L 167 mm
<b>Weight</b>	13.2 lb	6 kg
<b>Load Capacity</b>	353 lb (per pair)	160 kg (per pair)

#### Compatible Litters

##### FERNO Products:

- Najo Backboards
- Millennia Backboards
- Scoop EXL Stretcher
- Model 9
- Model 11
- Model 12
- Model 108-D Pole Stretcher
- Model 108 (All Models)
- SOF-L Special Operations Forces Litter

##### Junkin Safety Products:

- Medical Core Pole Stretchers
- Easy Fold Wheeled Stretcher
- Easy Fold with Elevating Headrest
- Easy Fold Wheeled Stretcher with Elevating Headrest & Handle

### Litter Arm | Ratchet Style Multipurpose

The New iNTRAXX ratchet style litter arm is 10g compliant when used in pairs on horizontal iNTRAXX track. The litter arms provide a compact solution to supporting a variety of products including Ferno, Nato and Junkin Litters. Litter arm is sold individually.



	IMPERIAL	METRIC
<b>Part Number</b>	0480220	
<b>Dimensions</b>	W 6.6 in D 27 in L 7.2 in	W 167 mm D 685 mm L 182 mm
<b>Weight</b>	13.2 lb	6 kg
<b>Load Capacity</b>	353 lb (per pair)	160 kg (per pair)
<b>Crash Tested</b>	10g	

#### Compatible Litters

##### FERNO Products:

- Najo Backboards
- Millennia Backboards
- Scoop EXL Stretcher
- Model #9
- Model #11
- Model #12
- Model #108-D Pole Stretcher
- Model #108 (All Models)
- SOF-L Special Operations Forces Litter
- All Nato Litters

##### Junkin Safety Products:

- Medical Core Pole Stretchers
- Easy Fold Wheeled Stretcher
- Easy Fold with Elevating Headrest
- Easy Fold Wheeled Stretcher with Elevating Headrest & Handle

#### KEY

- (W) Width is measured as 'Y' axis in relation to mounting to the track
- (D) Depth is measured as 'Z' axis in relation to mounting to the track
- (L) Length is measured as 'X' axis in relation to mounting to the track

Accessory Mounts

**Litter Arm | Litter Arm Mount**  
Talon 90C

Comprising of a pair the litter arms provide a compact solution to support the Talon 90C litter on an iN/TRAXX wall.



	IMPERIAL	METRIC
<b>Part Number</b>	0480037	
<b>Dimensions</b>	W 5 in D 28.7 in L 5 in	W 150 mm D 730 mm L 150 mm
<b>Weight</b>	13.2 lb	6 kg
<b>Load Capacity</b>	352.7 lb (per pair)	160 kg (per pair)

**Sold individually**

- Compatible with Talon11 90C, Talon 81C, Ferno 108T
- Sold individually
- Litters sold separately

**Litter Arm | Board Lock**

The New iN/TRAXX Board Lock is used in conjunction with the iN/TRAXX Litter arms. The board lock offers a quick, no fuss application to position and retain spine boards to the litter arms. Recommended to have a board lock for every litter arm.



	IMPERIAL	METRIC
<b>Part Number</b>	0480215	
<b>Dimensions</b>	W 1.7 in D 1.6 in L 6.3 in	W 42 mm D 40 mm L 160 mm
<b>Weight</b>	0.44 lb	0.2 kg
<b>Crash Tested</b>	10g	
<b>Standards/ Certifications</b>	AS/NZS 4535:1999, CEN 1789	

- Compatible to iN/TRAXX litter arms only
  - Refer to separate customer drawings for mounting details
  - Please refer to separate operators manual
- Compatible to 10G on the following litter arms:
- Litter Arm 0480036
  - Litter Arm 0480220

**KEY**

(W) Width is measured as 'Y' axis in relation to mounting to the track  
 (D) Depth is measured as 'Z' axis in relation to mounting to the track  
 (L) Length is measured as 'X' axis in relation to mounting to the track



Accessory Mounts

**Litter Arm | Light**

5VDC LED strip light with controller housed in an aluminum extrusion with an opaque defused cover. Adheres to the under side of the Talon 0480037 Litter arm, it provides a safe and secure light for the patient and attendant. The light includes a controller to change settings that can be easily set and remain in memory even after disconnection from power.



	IMPERIAL	METRIC
<b>Part Number</b>	0480179	
<b>Dimensions</b>	W 0.7 in D 0.4 in L 19.9 in	W 18 mm D 10 mm L 505 mm
<b>Weight</b>	0.19 lb	0.09 kg

- Order separately to Litter Arm
- 5V USB only
- Colors: Red, Blue, White, Green

**Spacer | Litter Arm Spacer**

Used in the 0480036 Litter Arm to space out the litter for security when latched.



	IMPERIAL	METRIC
<b>Part Number</b>	0480168	
<b>Dimensions</b>	W 1.4 in D 1.8 in L 2 in	W 36 mm D 45 mm L 50 mm
<b>Weight</b>	0.11 lb	0.05 kg
<b>Crash Tested</b>	10g, 22g, 26g	

- Required for NATO and Talon Litters

**KEY**

(W) Width is measured as 'Y' axis in relation to mounting to the track  
 (D) Depth is measured as 'Z' axis in relation to mounting to the track  
 (L) Length is measured as 'X' axis in relation to mounting to the track

Accessory Mounts

**Litter Arm | Loading Wedge**

The Litter Arm Loading Wedge provides a seamless transition when loading a compatible litter into the litter arm.



	IMPERIAL	METRIC
<b>Part Number</b>	0480153	
<b>Dimensions</b>	W 1.8 in D 7.7 in L 2 in	W 45 mm D 195 mm L 52 mm
<b>Weight</b>	0.8 lb	0.37 kg

**Ram Adapter | 2.5 SMC**  
SafeMount Connector

The Ram Adapter is the interface between the SafeMount connector and the Ram arm.



	IMPERIAL	METRIC
<b>Part Number</b>	0480047	
<b>Dimensions</b>	W 2.5 in D 0.3 in L 2.5 in	W 64 mm D 7 mm L 64 mm
<b>Weight</b>	0.1 lb	0.06 kg
<b>Crash Tested</b>	10g, 22g, 26g	

**KEY**

(W) Width is measured as 'Y' axis in relation to mounting to the track

(D) Depth is measured as 'Z' axis in relation to mounting to the track

(L) Length is measured as 'X' axis in relation to mounting to the track

Accessory Mounts

**Work Tray | With Arm**

The work tray provides a stable area for medics to place quick grab items when attending to a patient. The arm provides maneuverability to the desired position.



	IMPERIAL	METRIC
<b>Part Number</b>	0480039	
<b>Dimensions</b>	W 7.8 in D 12.7 in L 12.7 in	W 199 mm D 323 mm L 323 mm
<b>Weight</b>	3 lb	1.4 kg
<b>Crash Tested</b>	10g, 22g, 26g	

- Safe working load for the tray is 6 lb/3kg
- Secure loose items during transport
- Recommend use in the stationary position only

**Work Tray | Hinged 2.0**

The Work Tray – Hinged has the ability to be installed anywhere on the IN/TRAXX Track. The work tray provides a stable area for medics to place quick grab items when attending to a patient.



	IMPERIAL	METRIC
<b>Part Number</b>	0480123	
<b>Dimensions</b>	W 4.6 in D 14.3 in L 12.7 in	W 117 mm D 362 mm L 323 mm
<b>Weight</b>	2.4 lb	1.1 kg
<b>Crash Tested</b>	10g, 22g, 26g	

- Safe working load for the tray is 6 lb/3kg
- Secure loose items during transport
- Recommend use in the stationary position only

**KEY**

(W) Width is measured as 'Y' axis in relation to mounting to the track  
 (D) Depth is measured as 'Z' axis in relation to mounting to the track  
 (L) Length is measured as 'X' axis in relation to mounting to the track

Accessory Mounts

**SafeMount |**

Tablet General B101UC

The General Tablet Mount allows various Tablets or Devices to be mounted to iN/TRAXX with position adjustment.



	IMPERIAL	METRIC
<b>Part Number</b>	0480190	
<b>Dimensions</b>	W 5.9 in D 9.3 in L 6.6 in	W 151 mm D 235 mm L 167 mm
<b>Weight</b>	2.3 lb	1.1 kg
<b>Load Capacity</b>	4 lb	1.9 kg
<b>Crash Tested</b>	10g, 22g, 26g	

**KEY**

(W) Width is measured as 'Y' axis in relation to mounting to the track

(D) Depth is measured as 'Z' axis in relation to mounting to the track

(L) Length is measured as 'X' axis in relation to mounting to the track

Accessory Mounts

**Swivel SafeMount |**

360° "Long Handle"

Perfect for mounting equipment to Ferno PacRacs &/or iN/TRAXX bench track, rotational through 360° and multiple lock locations.



	IMPERIAL	METRIC
<b>Part Number</b>	0480164	
<b>Dimensions</b>	W 2.5 in D 11.4 in L 6.5 in	W 66 mm D 291 mm L 167 mm
<b>Weight</b>	18 lb	8.1 kg
<b>Load Capacity</b>	55.1 lb	25 kg
<b>Crash Tested</b>	10g, 22g, 26g	

**Swivel SafeMount |**

360° "Short Handle"

Perfect for mounting equipment to Ferno PacRacs and/or iN/TRAXX bench track, rotational through 360° and multiple lock locations.



	IMPERIAL	METRIC
<b>Part Number</b>	0480165	
<b>Dimensions</b>	W 2.5 in D 9.8 in L 6.5 in	W 66 mm D 250 mm L 167 mm
<b>Weight</b>	17.9 lb	8.1 kg
<b>Load Capacity</b>	55.1 lb	25 kg
<b>Crash Tested</b>	10g, 22g, 26g	

**KEY**

(W) Width is measured as 'Y' axis in relation to mounting to the track  
 (D) Depth is measured as 'Z' axis in relation to mounting to the track  
 (L) Length is measured as 'X' axis in relation to mounting to the track

Accessory Mounts

**Swivel Mount |**

Rear Holder

Used on the 04800164 and 0480165 swivel SafeMounts the rear vertical holder assist to hold aftermarket mounting brackets/ systems.



	IMPERIAL	METRIC
<b>Part Number</b>	0480170	
<b>Dimensions</b>	W 3.3 in D 0.9 in L 1.3 in	W 85 mm D 25 mm L 35 mm
<b>Weight</b>	.22 lb	.1 kg
<b>Crash Tested</b>	10g, 20g, 26g	

**ACC Mount |** Trash Bin Mount

Trash Bin Mount has the ability to be installed anywhere on the IN/TRAXX track. Provides a receptacle for the general waste and trash during patient treatments.



	IMPERIAL	METRIC
<b>Part Number</b>	0480044	
<b>Dimensions</b>	W 10.3 in D 9.2 in L 10.6 in	W 262 mm D 234 mm L 268 mm
<b>Weight</b>	4.4 lb	2 kg
<b>Load Capacity</b>	2.2 lb	1 kg

- Complete with Trash Bin (0480075)
- 90-Day Warranty on Trash Bin

**KEY**

(W) Width is measured as 'Y' axis in relation to mounting to the track  
 (D) Depth is measured as 'Z' axis in relation to mounting to the track  
 (L) Length is measured as 'X' axis in relation to mounting to the track

Accessory Mounts

**ACC Mount |** Trash Bin Mount

Trash Bin Mount has the ability to be installed anywhere on the iN/TRAXX track. Provides a receptacle for the general waste and trash during patient treatments.



	IMPERIAL	METRIC
<b>Part Number</b>	0480249	
<b>Dimensions</b>	W 11.5 in D 7.6 in L 9.7 in	W 288 mm D 191 mm L 242 mm
<b>Weight</b>	4.4 lb	2 kg
<b>Load Capacity</b>	2.2 lb	1 kg

- Complete with Trash Bin (0480251)
- 90-Day Warranty on Trash Bin

**ACC - Mount |**

Trash Hamper - Ophart

Trash Bin Mount is a great alternative, as it is small and secure and can be mounted in both horizontal and vertical track.



	IMPERIAL	METRIC
<b>Part Number</b>	0480106	
<b>Dimensions</b>	W 9.4 in D 11.81 in L 6.1 in	W 240 mm D 300 mm L 155 mm
<b>Weight</b>	2.2 lb	1 kg
<b>Load Capacity</b>	6.6 lb	3 kg
<b>Crash Tested</b>	10g, 20g, 26g	

- Plate is supplied as a kit including the bolts.
- Refer to separate operators manual
- Note: Ophart Bin is not supplied, purchase separately from your local Ophart supplier or alternatively, contact the FERNO team for assistance

**KEY**

(W) Width is measured as 'Y' axis in relation to mounting to the track  
 (D) Depth is measured as 'Z' axis in relation to mounting to the track  
 (L) Length is measured as 'X' axis in relation to mounting to the track

Accessory Mounts

**Sharps Bin Mount**

The Sharps Bin mount has the ability to be installed anywhere on the iN/TRAXX Track. The Sharps Bin provides a safe area to dispose of sharps with an anti-return feature to ensure no sharps can return from the bin.

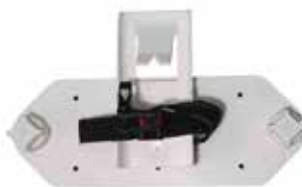


	IMPERIAL	METRIC
<b>Part Number</b>	0480045 <i>(While Supplies Last)</i>	
<b>Dimensions</b>	W 13.8 in D 6.8 in L 13 in	W 350 mm D 173 mm L 330 mm
<b>Weight</b>	4.9 lb	2.2 kg
<b>Load Capacity</b>	2.2 lb	1 kg
<b>Crash Tested</b>	10g, 22g, 26g	

- Complete with Sharps Bin (0480076)
- 90-Day Warranty on Sharps Bin

**Sharps Bin Mount | Sharpsafe**

The Sharpsafe mount is for attaching the “Sharpsafe” brand of sharps bins to the iN/TRAXX wall system. This mount can retain the 2 ltr, 3 ltr, 4 ltr, 7 ltr and 9 ltr Sharpsafe bins.



	IMPERIAL	METRIC
<b>Part Number</b>	0480141	
<b>Dimensions</b>	W 2.5 in D 7 in L 11.6 in	W 66 mm D 178 mm L 295 mm
<b>Weight</b>	1.6 lb	0.75 kg
<b>Crash Tested</b>	10g, 22g, 26g	

- The 0480141 is only compliance with EN, SAE and AUS/NZ standard retaining the 2 ltr, 3 ltr, 4 ltr Sharpsafe bins
- The sharps bins must be purchased separately from your Sharpsafe distributor
- The 0480141 is sold complete with the retention strap and plastic Sharpsafe mount

**KEY**

(W) Width is measured as 'Y' axis in relation to mounting to the track  
 (D) Depth is measured as 'Z' axis in relation to mounting to the track  
 (L) Length is measured as 'X' axis in relation to mounting to the track



Accessory Mounts

**Sharps Bin Mount |**

1.4LT Sharps Mount

The 1.4LT Sharps Mount allows the sharps container to fit into a horizontal or vertical track with retention straps that secure the sharps container. The mount is simple to clean and decontaminate.



	IMPERIAL	METRIC
<b>Part Number</b>	0480195	
<b>Dimensions</b>	W 6.3 in D 4.3 in L 11.8 in	W 160 mm D 110 mm L 300 mm
<b>Weight</b>	2.4 lb	1.1 kg
<b>Load Capacity</b>	4.4 lb	2 kg
<b>Crash Tested</b>	10g, 22g, 26g	

- Mount is supplied as a kit including required bolts
- Sharps containers sold separately by most global medical suppliers
- Ferno is not responsible of testing claims of OEM mounts.
- iN/TRAXX track sold separately

**Sharps Bin Mount**

The Sharps Bin mount has the ability to be installed anywhere on the iN/TRAXX Track. The Sharps Bin provides a safe area to dispose of sharps with an anti-return feature to ensure no sharps can return from the bin.



	IMPERIAL	METRIC
<b>Part Number</b>	0480248	
<b>Dimensions</b>	W 11.5 in D 7.6 in L 9.7 in	W 288 mm D 191 mm L 242 mm
<b>Weight</b>	4.4 lb	2 kg
<b>Load Capacity</b>	2.2 lb	1 kg
<b>Crash Tested</b>	10g, 22g, 26g	

- Complete with Sharps Bin (0480250)
- 90-Day Warranty on Sharps Bin

**KEY**

(W) Width is measured as 'Y' axis in relation to mounting to the track  
 (D) Depth is measured as 'Z' axis in relation to mounting to the track  
 (L) Length is measured as 'X' axis in relation to mounting to the track

Accessory Mounts

**ACC - Mount | Glovebox Single**

The Glovebox Single holder accepts and secures most sizes of standard glove boxes. Designed to be easily cleaned, load and mount using our rotating lock knobs to secure to the iN/TRAXX track.



	IMPERIAL	METRIC
<b>Part Number</b>	0480099	
<b>Dimensions</b>	W 10.1 in D 4.4 in L 9.7 in	W 259 mm D 114 mm L 247 mm
<b>Weight</b>	2 lb	0.93 kg
<b>Load Capacity</b>	2.2 lb	1 kg
<b>Crash Tested</b>	10g, 22g, 26g	

- Glovebox is designed for horizontal track mounting only
- Please refer to separate operators manual

**ACC - Mount | Glovebox Triple**

The Glovebox Triple holder accepts and secures most sizes of standard glove boxes. Designed to be easily cleaned, load and mount using our rotating lock knobs to secure to the iN/TRAXX track.



	IMPERIAL	METRIC
<b>Part Number</b>	0480100	
<b>Dimensions</b>	W 15.5 in D 4.4 in L 14.4 in	W 394 mm D 114 mm L 367 mm
<b>Weight</b>	3.4 lb	1.5 kg
<b>Load Capacity</b>	6.6 lb	3 kg
<b>Crash Tested</b>	10g, 22g, 26g	

- Glovebox is designed for horizontal track mounting only
- Please refer to separate operators manual

**KEY**

(W) Width is measured as 'Y' axis in relation to mounting to the track  
 (D) Depth is measured as 'Z' axis in relation to mounting to the track  
 (L) Length is measured as 'X' axis in relation to mounting to the track

## Accessory Mounts

### ACC - Mount | Glovebox Quad

The Glovebox Quad holder accepts and secures most sizes of standard glove boxes. Designed to be easily cleaned, loaded, and mounted using our rotating lock knobs to secure to the iN/TRAXX track.



	IMPERIAL	METRIC
<b>Part Number</b>	0480101	
<b>Dimensions</b>	W 10.7 in D 4.5 in L 24.5 in	W 272 mm D 116 mm L 623 mm
<b>Weight</b>	26.3 lb	11.5 kg
<b>Load Capacity</b>	8.8 lb	4 kg
<b>Crash Tested</b>	10g, 22g, 26g	

- Glovebox is designed for horizontal track mounting only
- 0480101 must have 4 glove boxes installed at all times
- Please refer to separate operators manual

### ACC - Mount | HP Printer Mount

The HP Printer Mount accepts a HP Office Jet 202 style printer but could be adapted for other styles of printers. Designed to be easily cleaned, loaded, and mounted using our SafeMount system. This is a wall mount into iN/TRAXX track.



	IMPERIAL	METRIC
<b>Part Number</b>	0480227	
<b>Dimensions</b>	W 14.5 in D 12 in L 9.8 in	W 368 mm D 304 mm L 250 mm
<b>Weight</b>	5.4 lb	2.4 kg
<b>Load Capacity</b>	6.6 lb	3 kg

- Supplied complete with bolts and spacers to suit each
- iN/TRAXX wall mount only
- Refer to separate customer drawings for mounting details.
- Please refer to separate operators manual.
- Not crash tested.

#### KEY

(W) Width is measured as 'Y' axis in relation to mounting to the track  
 (D) Depth is measured as 'Z' axis in relation to mounting to the track  
 (L) Length is measured as 'X' axis in relation to mounting to the track

Accessory Mounts

**Adapter Block | Direct Mount**

The New iN/TRAXX Adaptor block is used when direct to wall or direct to bench mounting is required without using a safemount and intraxx track system



	IMPERIAL	METRIC
<b>Part Number</b>	0480194	
<b>Dimensions</b>	W 3.3 in D 0.5 in L 3.3 in	W 85 mm D 12 mm L 85 mm
<b>Weight</b>	0.88 lb	0.40 kg
<b>Crash Tested</b>	10g, 22g, 26g	

- Ferno is not responsible of testing claims of OEM mounts
- Compliance is in conjunction with other device mounts.

**Lock Knob | Multi Mount**

The Lock Knob Multi Mount supplies options for mounting a range of light weight products. A series of pre-drilled holes allows for equipment such as PouchMount plate, sphygmometer and sharps containers just to name a few.



	IMPERIAL	METRIC
<b>Part Number</b>	0480210	
<b>Dimensions</b>	W 6.3 in D 4.3 in L 11.8 in	W 160 mm D 110 mm L 300 mm
<b>Weight</b>	1.3 lb	0.61 kg
<b>Load Capacity</b>	4.4 lb	2 kg
<b>Crash Tested</b>	10g, 22g, 26g	

- Products to be mounted are sold separately
- Ferno is not responsible of testing claims of OEM mounts
- iN/TRAXX track sold separately

**KEY**

(W) Width is measured as 'Y' axis in relation to mounting to the track  
 (D) Depth is measured as 'Z' axis in relation to mounting to the track  
 (L) Length is measured as 'X' axis in relation to mounting to the track

Accessory Mounts

**Lock Knob | Multipurpose**

Lock Knobs are used on various pieces throughout the Ferno range and are used to secure products to INJTRAXX.



**Lock Knob | Multipurpose**  
Round Foot

Lock Knobs are used on various pieces throughout the Ferno range and are used to secure products to INJTRAXX.



**T Slot | Foot**

The T Slot Foot with two M6 threaded holes, 16mm apart, provides an alternative mounting solution for various products to INJTRAXX.



**KEY**

(W) Width is measured as 'Y' axis in relation to mounting to the track  
 (D) Depth is measured as 'Z' axis in relation to mounting to the track  
 (L) Length is measured as 'X' axis in relation to mounting to the track

	IMPERIAL	METRIC
<b>Part Number</b>	0480071	
<b>Dimensions</b>	W 1.5 in D 21.1 in L 1.5 in	W 37.6 mm D 53 mm L 37.6 mm
<b>Weight</b>	0.5 lb	0.23 kg
<b>Crash Tested</b>	10g, 22g, 26g	

• Sold individually

	IMPERIAL	METRIC
<b>Part Number</b>	0480132	
<b>Dimensions</b>	W 1.5 in D 21.1 in L 1.5 in	W 37.6 mm D 53 mm L 37.6 mm
<b>Weight</b>	0.5 lb	0.23 kg
<b>Crash Tested</b>	10g, 22g, 26g	

• Sold individually

	IMPERIAL	METRIC
<b>Part Number</b>	0480089	
<b>Dimensions</b>	W 0.7 in D 0.3 in L 1.2 in	W 19 mm D 7 mm L 31 mm
<b>Weight</b>	0.02 lb	0.001 kg
<b>Crash Tested</b>	10g, 22g, 26g	

**SafeSeat | Single Lapsash**

Mounts into iN/TRAXX and allows the ability to move the seat around the vehicle as clinical procedures demand.



	IMPERIAL	METRIC
<b>Part Number</b>	0480115	
<b>Dimensions</b>	W 38.1 in D 22.2 in L 22 in	W 970 mm D 565 mm L 560 mm
<b>Weight</b>	52.9 lb	24 kg

- Refer to Installation Manual for installation instructions.
- Dimensions relate to seat in unfolded position with headrest fully extended
- Refer to FMVSS and UN Regulation for test specifications

**SafeSeat | Dual Lapsash**

Mounts into iN/TRAXX and allows the ability to move the seat around the vehicle as clinical procedures demand.



	IMPERIAL	METRIC
<b>Part Number</b>	0480166	
<b>Dimensions</b>	W 38.1 in D 22.2 in L 22 in	W 970 mm D 565 mm L 560 mm
<b>Weight</b>	55.1 lb	25 kg

- Refer to Installation Manual for installation instructions.
- Dimensions relate to seat in unfolded position with headrest fully extended
- Refer to FMVSS and UN Regulation for test specifications

**KEY**

(W) Width is measured as 'Y' axis in relation to mounting to the track  
 (D) Depth is measured as 'Z' axis in relation to mounting to the track  
 (L) Length is measured as 'X' axis in relation to mounting to the track

Spare Parts

**SafeMount | Connector**

Used in the SafeMount with Connector, it is the interface between the equipment and the SafeMount.



	IMPERIAL	METRIC
<b>Part Number</b>	0480012	
<b>Dimensions</b>	W 1.8 in D 0.6 in	W 45.7 mm D 45.7 mm
<b>Weight</b>	0.1 lb	0.045 kg
<b>Load Capacity</b>	22 lb	10 kg
<b>Crash Tested</b>	10g, 22g, 26g	

**Spacer Plate | 0.5 in**

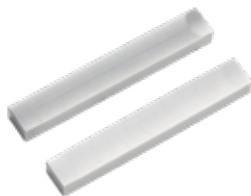
The Spacer Plate can be used on the 12 and 25kg Threaded SafeMounts and provides a surface 0.5" further away from the IN/TRAXX.



	IMPERIAL	METRIC
<b>Part Number</b>	0480057	
<b>Dimensions</b>	W 3.3 in D 0.05 in L 3.3 in	W 85 mm D 12.7 mm L 85 mm
<b>Weight</b>	0.3 lb	0.12 kg

**Splice Key | Track Splicing**

The Splicing Keys are used to join 2 end sections of IN/TRAXX.



	IMPERIAL	METRIC
<b>Part Number</b>	0480054	
<b>Dimensions</b>	W 0.3 in D 0.2 in L 2.4 in	W 8 mm D 6 mm L 60 mm
<b>Weight</b>	0.019 lb	8.6 g

- Pack of 2
- Included with each standard length of track

**KEY**

(W) Width is measured as 'Y' axis in relation to mounting to the track  
 (D) Depth is measured as 'Z' axis in relation to mounting to the track  
 (L) Length is measured as 'X' axis in relation to mounting to the track

Spare Parts

**Set Screw |** Track Splicing

Set Screws are used to secure the splice key in place when joining sections of track.



	IMPERIAL	METRIC
<b>Part Number</b>	0480055	
<b>Dimensions</b>	W 0.16 in	W 4 mm
	D 0.24 in	D 6 mm
	L 0.16 in	L 4 mm

- Pack of 4
- Included with each standard length of track

**Adapter Plate |** LifePak 15

The plate is a serviceable item fitted to the bottom of the LifePak 15 defib to locate the defib in the iN/TRAXX mount and protect the bottom of your defibrillator.



	IMPERIAL	METRIC
<b>Part Number</b>	0480167	
<b>Dimensions</b>	W 0.6 in	W 16 mm
	D 6.9 in	D 174 mm
	L 3.7 in	L 94 mm
<b>Weight</b>	0.4 lb	0.2 kg

**Container |** Trash

This spare trash container is a serviceable item to replace as needed for part #0480044.



	IMPERIAL	METRIC
<b>Part Number</b>	0480075	
<b>Dimensions</b>	W 10 in	W 225 mm
	D 9.8 in	D 250 mm
	L 10.4 in	L 265 mm

- 0480044 comes with a container

**KEY**

(W) Width is measured as 'Y' axis in relation to mounting to the track  
 (D) Depth is measured as 'Z' axis in relation to mounting to the track  
 (L) Length is measured as 'X' axis in relation to mounting to the track



Spare Parts

**Container | Trash**

This spare trash container is a serviceable item to replace as needed for part #0480249.



	IMPERIAL	METRIC
<b>Part Number</b>	0480251	
<b>Dimensions</b>	W 12 in	W 300 mm
	D 4.4 in	D 110 mm
	L 11.6 in	L 290 mm

- 0480249 comes with a container
- 90-Day Warranty on trash bin

**Container | Sharps**

This spare sharps container is a serviceable item to replace as needed for part #0480045.



	IMPERIAL	METRIC
<b>Part Number</b>	0480076 <i>(While Supplies Last)</i>	
<b>Dimensions</b>	W 12.2 in	W 310 mm
	D 4.3 in	D 110 mm
	L 11.4 in	L 290 mm

- 0480045 comes with a container

**Container | Sharps**

This spare sharps container is a serviceable item to replace as needed for part #0480248.



	IMPERIAL	METRIC
<b>Part Number</b>	0480250	
<b>Dimensions</b>	W 12.4 in	W 310 mm
	D 4.4 in	D 110 mm
	L 11.6 in	L 290 mm

- 0480048 comes with a container
- 90-Day Warranty on sharps bin

**KEY**

(W) Width is measured as 'Y' axis in relation to mounting to the track  
 (D) Depth is measured as 'Z' axis in relation to mounting to the track  
 (L) Length is measured as 'X' axis in relation to mounting to the track

Service Kits

**Service Kits | LP 15**

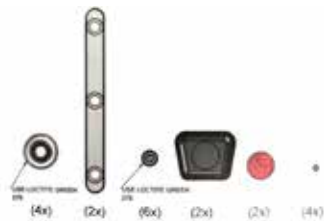
The LP 15 defibrillator mount service kit replaces the items within your defibrillator mount bracket to keep it in the best possible operational condition.

**Service Kits | Zoll**

The Zoll defibrillator mount service kit replaces the items within your defibrillator mount bracket to keep it in the best possible operational condition.

**Service Kits | SafeMounts**

The New iNTRAXX SafeMount service kit replaces the items within your SafeMount required to Service your Safemounts to retain the best possible operational condition.



**Service Kits | SafePak Multi-Mount Wedge**

The wedge is a service item for the SafePak Mounts.



**Service Kits | Swivel Mount Handle**

The new iNTRAXX SafeMount swivel mount handle service kit replaces the items within your swivel mount required to retain the best possible operational condition. Short and long handle kits available.

**KEY**

- (W) Width is measured as 'Y' axis in relation to mounting to the track
- (D) Depth is measured as 'Z' axis in relation to mounting to the track
- (L) Length is measured as 'X' axis in relation to mounting to the track



**Part Number** 0480214

- 0480014 kit supplied complete. Parts not sold separately
- Please follow instructions for the replacement of these spare parts



**Part Number** 0480213

- 0480213 kit complete. Parts not sold separately
- Please follow instructions for the replacement of these spare parts



**Part Number** 0480240

- Compatible to use on iNTRAXX safemounts 0480010, 0480011 & 0480146
- Please follow instructions for the replacement of these spare parts
- Refer to separate operators manual for instructions



**Part Number** 0480208

- Compatible with 0480193, 0480209, 0480207, and 0480201
- Refer to separate operators manual for instructions



<b>Part Number</b>	0480228	Short Handle
	0480229	Long Handle

- 0480228 Short Handle Kit is compatible with 0480164 and iNTRAXX swivel mounts with short handles
- 0480229 Long Handle Kit is compatible with 0480165 and iNTRAXX swivel mounts with long handles
- Please follow instructions for the replacement of these spare parts
- Refer to separate operators manual for instructions

## Product Spec Index

ITEM NUMBER	PRODUCT	WIDTH	DEPTH	LENGTH	WEIGHT	MATERIAL	FINISH	CERTIFICATION STANDARD	LOAD CAPACITY/ SWL	SOLD IN USA
0480001	Track System   1016mm	7.4 in   189 mm	.5 in   12.7 mm	40 in   1016 mm	7.5 lb   3.4 kg	Aluminum	Clear Natural Anodized	10G   22G   26G	220.4 lb   100 kg	Yes
0480002 0480003 0480004	Black End Caps   Regular Grey End Caps   Regular White End Caps   Regular	7.6 in   90 mm	1.9 in   48 mm	.7 in   17 mm	.605 lb   90 g	Zytel	Black, Grey, or White	10G   22G   26G	—	Yes
0480005 0480006 0480007	Black   T-Splice Caps Grey   T-Splice Caps White   T-Splice Caps	7.4 in   193 mm	.9 in   24 mm	.6 in   16 mm	.14 lb   64 g	Zytel	Black, Grey, or White	10G   22G   26G	—	Yes
0480008	Track Clip	2.7 in   69 mm	1.6 in   40.5 mm	1.6 in   41.5 mm	.2 lb   .08 kg	Aluminum 7075-T6, Stainless Steel, Plastic	Clear Natural Anodized, Powder Coated Red & White	10G   22G   26G	5 lb   2.27 kg	Yes
0480010	SafeMount   Threaded (25kg)	5.9 in   151 mm	1.4 in   34.5 mm	6.6 in   167 mm	1.86 lb   .845 kg	Aluminum 7075-T6, Stainless Steel, Plastic	Clear Natural Anodized, Powder Coated White	10G   22G   26G	25 kg	Yes
0480011	SafeMount   With Connector	7.4 in   187 mm	1.9 in   48.5 mm	6.6 in   167 mm	1.65 lb   .75 kg	Aluminum 7075-T6, Stainless Steel, Plastic	Clear Natural Anodized, Powder Coated White	10G   22G   26G	22 lb   10 kg	Yes
0480012	SafeMount   Connector	1.8 in   45.7 mm	.6 in   14.9 mm	—	.1 lb   .045 kg	Aluminum 7075-T6	Clear Natural Anodized	10G   22G   26G	22 lb   10 kg	Yes
0480013	Defibrillator Wall Mount   LifePak 15	14 in   356 mm	12.6 in   321 mm	8.3 in   210 mm	14.8 lb   6.7 kg	Aluminum 7075-T6, Stainless Steel, Plastic	Powder Coated White	10G   22G   26G	—	Yes
0480014	Defibrillator Swivel Mount   LifePak 15	16.3 in   415 mm	12 in   304 mm	8.3 in   210 mm	16.3 lb   7.4 kg	Aluminum 7075-T6, Stainless Steel, Plastic	Powder Coated White	10G   22G   26G	—	Yes
0480015	Defibrillator Wall+Swivel Mount   LifePak 15	16.3 in   415 mm	13.5 in   344 mm	8.3 in   210 mm	18.3 lb   8.3 kg	Aluminum 7075-T6, Stainless Steel, Plastic	Powder Coated White	10G   22G   26G	—	Yes
0480019	Defibrillator Wall Mount   Zoll X Series	11.1 in   282 mm	11.2 in   285 mm	8.3 in   210 mm	12.3 lb   5.6 kg	Plastic, Aluminum	Powder Coated White	10G   22G   26G	—	Yes
0480020	Defibrillator Swivel Mount   Zoll X Series	13.5 in   342 mm	10.4 in   265 mm	8.3 in   210 mm	17.4 lb   7.9 kg	Plastic, Aluminum	Powder Coated White	10G   22G   26G	—	Yes
0480021	Defibrillator Wall+Swivel Mount   Zoll X Series	13.5 in   342 mm	12 in   305 mm	8.3 in   210 mm	19.4 lb   8.8 kg	Plastic, Aluminum	Powder Coated White	10G   22G   26G	—	Yes
0480022	SafePak   Mount	43.9 in   1114 mm	2 in   50 mm	19 in   485 mm	12.79 lb   5.8 kg	Plastic, Aluminum	Powder Coated White	10G   22G   26G	25 lb   11.38 kg	Yes
0480023	Red SafePak   Small	12.8 in   325 mm	9.4 in   240 mm	18.1 in   460 mm	11.1 lb   5.03 kg	Plastic	Red	10G   22G   26G	17 lb   7.71 kg	Yes
0480024	Red SafePak   Regular	18.9 in   481 mm	9.4 in   240 mm	18.1 in   460 mm	16.9 lb   7.66 kg	Plastic	Red	10G   22G   26G	25 lb   11.34 kg	Yes
0480026	SafePak Pouch   Small	4.7 in   120 mm	2.8 in   70 mm	3.9 in   100 mm	.3 lb   .136 kg	Plastic	Glossy Grey Shell, Matte Grey Plastics	10G   22G   26G	.5 lb   .226 kg	Yes
0480027	SafePak Pouch   Medium	4.7 in   120 mm	2.8 in   70 mm	7.9 in   200 mm	0.6 lb   0.25 kg	Plastic	Glossy Grey Shell, Matte Grey Plastics	10G   22G   26G	2.5 lb   1.13 kg	Yes
0480028	SafePak Pouch   Large Vertical	10.2 in   260 mm	2.8 in   70 mm	7.9 in   200 mm	0.9 lb   0.4 kg	Plastic	Glossy Grey Shell, Matte Grey Plastics	10G   22G   26G	4.5 lb   2.04 kg	Yes
0480029	SafePak Pouch   Large Horizontal	4.7 in   120 mm	2.8 in   70 mm	15.7 in   400 mm	0.9 lb   0.4 kg	Plastic	Glossy Grey Shell, Matte Grey Plastics	10G   22G   26G	4.5 lb   2.04 kg	Yes
0480030	Pouch Mount Carrier   Single	4.6 in   118 mm	0.6 in   15 mm	7.5 in   190 mm	0.23 lb   0.106 kg	Plastic	Grey, Red	10G   22G   26G	5 lb   2.4 kg	Yes
0480031	Pouch Track Mount   Single	4.9 in   125 mm	2.1 in   53.9 mm	11.4 in   290 mm	1.59 lb   .725 kg	Aluminum, Plastic	Powder Coated White, Grey Plastics	10G   22G   26G	5 lb   2.4 kg	Yes
0480032	Pouch Track Mount   Double Vertical	10.6 in   268 mm	2.1 in   53.9 mm	11.4 in   290 mm	5.57 lb   1.23 kg	Aluminum, Plastic	Powder Coated White, Grey Plastics	10G   22G   26G	5 lb   2.4 kg	Yes
0480034	Oxygen Mount   Single	18.9 in   480 mm	8.3 in   210 mm	6.6 in   167 mm	4.9 lb   2.2 kg	Plastic, Aluminum	Powder Coated White	10G   22G   26G	25 kg	Yes
0480036	Litter Arm   Multipurpose	7.2 in   182 mm	28.7 in   730 mm	6.6 in   167 mm	13.2 lb   6 kg	Aluminum	Powder Coated White	—	352.7 lb   160 kg per pair	Yes
0480037	Litter Arm   Litter Arm Mount Talon 90C	5 in   150 mm	28.7 in   730 mm	5 in   150 mm	13.2 lb   6 kg	Steel	Powder Coated Black	10G	—	Yes
0480038	Vent Mount   Impact 731	7.8 in   199 mm	2.5 in   64 mm	6.6 in   167 mm	2 lb   0.9 kg	Plastic, Aluminum	Powder Coated White	10G   22G   26G	—	Yes
0480039	Work Tray   With Arm	7.8 in   199 mm	12.7 in   323 mm	12.7 in   323 mm	3 lb   1.37 kg	Aluminum, Plastic	White	10G   22G   26G	—	Yes
0480042	LSU Mount   Laerdal	6.8 in   173 mm	2.2 in   57 mm	7.5 in   190 mm	2.6 lb   1.2 kg	Aluminum	Powder Coated White	10G   22G   26G	27.6 lb   12.5 kg	Yes
0480043	Suction Mount   SSCOR	5.9 in   151 mm	2.4 in   60 mm	7.9 in   200 mm	2.6 lb   1.2 kg	Aluminum	Powder Coated White	10G   22G   26G	—	Yes
0480044	Trash Bin   Mount	10.3 in   262 mm	9.2 in   234 mm	10.6 in   268 mm	4.4 lb   2 kg	Plastic, Aluminum	Powder Coated White	10G   22G   26G	2.2 lb   1 kg	Yes
0480045	Sharps Bin   Mount	13.8 in   350 mm	6.8 in   173 mm	13 in   330 mm	4.9 lb   2.2 kg	Plastic, Aluminum	Powder Coated White	10G   22G   26G	2.2 lb   1 kg	Yes

## Product Spec Index

ITEM NUMBER	PRODUCT	WIDTH	DEPTH	LENGTH	WEIGHT	MATERIAL	FINISH	CERTIFICATION STANDARD	LOAD CAPACITY/ SWL	SOLD IN USA
0480047	Ram Adapter   2.5 SMC	2.5 in   64 mm	0.3 in   7 mm	2.5 in   64 mm	0.1 lb   0.06 kg	Aluminum	Black	10G   22G   26G	—	Yes
0480048	Suction Mount   Laerdal LCSU4	10 in   255 mm	10 in   254 mm	6.92 in   176 mm	8.02 lb   3.64 kg	Aluminum	Powder Coated White	10G   22G   26G	55.11 lb   25 kg	Yes
0480049 0480050 0480051	Black End Caps   Thin Grey End Caps   Thin White End Caps   Thin	7.4 in   193 mm	1.5 in   48 mm	.7 in   17 mm	.605 lb   275 g	Zytel	Black, Grey, or White	10G   22G   26G	—	Yes
0480054	Splicing Key	—	—	2.4 in   60 mm	.019 lb   8.6 g	Aluminum	None	10G   22G   26G	—	Yes
0480056	Wall Mount   Corpuls 3	7.7 in   196 mm	3.9 in   98 mm	10.3 in   261 mm	3.5 lb   1.59 kg	Aluminum	Powder Coated White	10G   22G   26G	—	Yes
0480057	Spacer Plate   0.5 in	3.3 in   85 mm	0.5 in   12.7 mm	3.3 in   85 mm	0.3 lb   0.12 kg	Plastic	White	—	—	Yes
0480059 0480060	Blue SafePak   Regular White SafePak   Regular	18.9 in   481 mm	9.4 in   240 mm	18.1 in   460 mm	16.9 lb   7.66 kg	Plastic	Red, Blue, or White	10G   22G   26G	25 lb   11.34 kg	Yes
0480062	Track System   340 mm, Black End Caps	7.6 in   193 mm	0.7 in   17 mm	13.4 in   340 mm	2.6 lb   1.2 kg	Aluminum & Plastic	Clear Natural Anodized	10G   22G   26G	55.1 lb   25 kg	Yes
0480071	Lock Knob   Multipurpose	1.5 in   37.6 mm	2.1 in   53 mm	1.5 in   37.6 mm	0.5 lb   0.23 kg	Stainless Steel & Plastic	White	10G   22G   26G	—	Yes
0480072	SafePak   Pouch Divider	3.9 in   99 mm	2.55 in   64.8 mm	1.57 in   40 mm	—	Plastic	Grey	—	—	Yes
0480073	Track System   1016 mm, No Holes (Bonding)	7.4 in   189 mm	0.5 in   12.7 mm	40 in   1016 mm	7.5 lb   3.4 kg	Aluminum	Clear Natural Anodized	10G   22G   26G	220.4 lb   100 kg	Yes
0480074	Mounting Plate   PneuPac	7.8 in   199 mm	2.4 in   60 mm	6.6 in   167 mm	2.4 lb   1.08 kg	Aluminum	Powder Coated White	10G   22G   26G	—	Yes
0480075	Container   Trash	10.3 in   255 mm	9.8 in   250 mm	10.4 in   265 mm	—	Plastic	Grey	—	—	Yes
0480076	Container   Sharps	12.2 in   310 mm	11.4 in   290 mm	4.3 in   110 mm	—	Plastic	Red Clear	—	—	Yes
0480077	Blue SafePak   Small	12.8 in   325 mm	9.4 in   240 mm	18.1 in   460 mm	11.1 lb   5.03 kg	Plastic	Blue	10G   22G   26G	17 lb   7.71 kg	Yes
0480080	Pole Mount   Single	8.1 in   206 mm	5.5 in   140 mm	6.6 in   167 mm	3.6 lb   1.62 kg	Aluminum	Clear Natural Anodized	10G   22G   26G	—	Yes
0480081	Pole Mount   Double	12.6 in   320 mm	4.1 in   103 mm	6.6 in   167 mm	3.7 lb   1.7 kg	Aluminum	Clear Natural Anodized	10G   22G   26G	—	Yes
0480082	Medrail Mount   25mm	5.9 in   151 mm	3.2 in   81 mm	12 in   305 mm	2.7 lb   1.23 kg	Aluminum	Clear Natural Anodized	10G   22G   26G	—	Yes
0480083	Pouch Track Mount   Double	4.9 in   125 mm	2.1 in   53.9 mm	21.5 in   545 mm	2.2 lb   1.14 kg	Aluminum, Plastic	Powder Coated White, Grey Plastics	10G   22G   26G	5 lb   2.4 kg	Yes
0480084	Wall Mount   Physio LP1000 AED	7.7 in   196 mm	2.4 in   62 mm	10 in   253 mm	3.1 lb   1.4 kg	Aluminum	Powder Coated White	10G   22G   26G	—	Yes
0480085	SafeCab   Small	13.8 in   350 mm	13 in   330 mm	21.5 in   545 mm	29.8 lb   13.5 kg	CPVC	White with Red Trim	10G   22G   26G	11 lb   5 kg	Yes
0480086	SafeCab   Medium	13.8 in   350 mm	13 in   330 mm	31.5 in   800 mm	36.4 lb   16.5 kg	CPVC	White with Red Trim	10G   22G   26G	17.6 lb   8 kg	Yes
0480087	SafeCab   Large	13.8 in   350 mm	13 in   330 mm	46.5 in   1180 mm	51.8 lb   23.5 kg	CPVC	White with Red Trim	10G   22G   26G	26.5 lb   12 kg	Yes
0480089	T Slot   Foot	0.7 in   19 mm	0.3 in   7 mm	1.2 in   31 mm	0.02 lb   0.01 kg	Aluminum	Clear Natural Anodized	10G   22G   26G	—	Yes
0480090	White SafePak   Small	12.8 in   325 mm	9.4 in   240 mm	18.1 in   460 mm	11.1 lb   5.03 kg	Plastic	White	10G   22G   26G	17 lb   7.71 kg	Yes
0480091	Medrail Mount   30mm	5.9 in   151 mm	3.2 in   81 mm	12 in   305 mm	3.2 lb   1.44 kg	Aluminum	Clear Natural Anodized	10G   22G   26G	—	Yes
0480092	SafePak Pouch   Medium Mesh	4.7 in   120 mm	Expandable to 4 in   101.6 mm	7.9 in   200 mm	1.5 lb   .7 kg	Flexible Mesh	Mesh Fabric, Matte Grey Plastics	10G   22G   26G	2.5 lb   1.13 kg	Yes
0480093	Wall Mount   Corpuls Monitor	7.8 in   199 mm	3.9 in   98 mm	6.6 in   167 mm	2.9 lb   1.3 kg	Aluminum	Powder Coated White	10G	—	Yes
0480094	Swivel Mount   Corpuls 3	10.3 in   261 mm	9.8 in   250 mm	10.3 in   262 mm	4.9 lb   2.24 kg	Aluminum	Powder Coated White	10G   22G   26G	—	Yes
0480095	Wall + Swivel Mount   Corpuls 3	10.3 in   261 mm	10.5 in   266 mm	10.3 in   262 mm	7.6 lb   3.44 kg	Aluminum	Powder Coated White	10G   22G   26G	—	Yes
0480099	ACC - Mount - Glovebox Single	10.1 in   259 mm	4.4 in   114 mm	9.7 in   247 mm	2.2 lb   1 kg	Aluminum	Powder Coated White	10G   22G   26G	2.2 lb   1 kg	—
0480100	ACC - Mount - Glovebox Triple	15.5 in   394 mm	4.8 in   114 mm	14.4 in   367 mm	3.4 lb   1.5 kg	Aluminum	Powder Coated White	10G   22G   26G	6.6 lb   3 kg	Yes
0480101	ACC - Mount - Glovebox Quad	10.7 in   272 mm	4.5 in   116 mm	24.5 in   623 mm	4.6 lb   2.1 kg	Aluminum	Powder Coated White	10G   22G   26G	8.1 lb   4 kg	Yes
0480106	ACC - Mount   Trash Hamper - Ophart	9.44 in   240 mm	11.8 in   300 mm	6.1 in   155 mm	2.2 lb   1 kg	Aluminum	Powder Coated White	10G   22G   26G	6.6 lb   3 kg	Yes
0480107	Ceiling Track   Right	7.4 in   189 mm	.5 in   12.7 mm	40 in   1016 mm	7.5 lb   3.4 kg	Aluminum	Clear Natural Anodized	10G   22G   26G	220.4 lb   100 kg	Yes
0480108	Ceiling Track   Center	7.4 in   189 mm	.5 in   12.7 mm	40 in   1016 mm	7.5 lb   3.4 kg	Aluminum	Clear Natural Anodized	10G   22G   26G	220.4 lb   100 kg	Yes
0480109	Wall Vent Mount   Draeger	11.2 in   285 mm	10.2 in   259 mm	9.5 in   242 mm	6.9 lb   3.14 kg	Aluminum	Powder Coated White	10G   22G   26G	—	Yes
0480110	Swivel Vent Mount   Draeger	13.8 in   351 mm	9.9 in   251 mm	9.6 in   243 mm	8.7 lb   3.93 kg	Aluminum	Powder Coated White	10G   22G   26G	—	Yes
0480112	Pole Mount   Vertical	5.9 in   151 mm	10 in   255 mm	6.6 in   167 mm	2.8 lb   1.29 kg	Aluminum	Clear Natural Anodized	10G   22G   26G	—	Yes
0480115	SafeSeat   Single Lapsash	38.1 in   970 mm	22.2 in   565 mm	22 in   560 mm	52.9 lb   24 kg	Aluminum	Black	10G   22G   26G	—	Yes
0480123	Work Tray   Hinged 2.0	4.6 in   117 mm	14.3 in   362 mm	12.7 in   323 mm	2.4 lb   1.11 kg	Aluminum, Plastic	White	10G   22G   26G	—	Yes

## Product Spec Index

ITEM NUMBER	PRODUCT	WIDTH	DEPTH	LENGTH	WEIGHT	MATERIAL	FINISH	CERTIFICATION STANDARD	LOAD CAPACITY/ SWL	SOLD IN USA
0480124	HERSILL Mount   V7 Plus B Emergency	5.9 in   151 mm	1.9 in   48 mm	6.6 in   167 mm	2.3 lb   1.05 kg	Aluminum	Powder Coated White	10G   22G   26G	—	Yes
0480126	Oxygen Mount   Double	34.5 in   876 mm	8.9 in   226 mm	17.8 in   451 mm	34 lb   15.4 kg	Plastic, Aluminum	Powder Coated White	10G   22G   26G	—	Yes
0480127	Oxygen Mount   CD 02 Mount Bracket Only	19.7 in   500 mm	5.6 in   142 mm	0.39 in   10 mm	2.2 lb   1 kg	Aluminum	Powder Coated White	10G   22G   26G	77.2 lb   25 kg	Yes
0480128	Oxygen Mount   CD 02 Cylinder Bracket Only	19.7 in   500 mm	5.6 in   142 mm	0.39 in   10 mm	2.2 lb   1 kg	Aluminum, Rubber	Powder Coated White	10G   22G   26G	77.2 lb   25 kg	Yes
0480132	Lock Knob   Multipurpose Round Foot	1.5 in   37.6 mm	2.1 in   53 mm	1.5 in   37.6 mm	0.5 lb   0.23 kg	Stainless Steel & Plastic	White	10G   22G   26G	—	Yes
0480139	Vent Mount   Hamilton T1 Wall Mount Bracket	9.5 in   242 mm	4 in   100 mm	8.3 in   210 mm	1.1 lb   0.5 kg	Aluminum	Powder Coated White	10G   22G   26G	17.6 lb   8 kg	Yes
0480141	Sharps Bin Mount   Sharpsafe	2.5 in   65 mm	7 in   178 mm	11.6 in   295 mm	1.6 lb   .75 kg	Aluminum	Powder Coated White	10G   22G   26G	—	Yes
0480145	Oxygen Mount   Double	34.5 in   876 mm	8.9 in   226 mm	17.8 in   451 mm	34 lb   15.4 kg	Plastic, Aluminum	Powder Coated White	10G   22G   26G	—	Yes
0480146	SafeMount   Threaded (12kg)	5.9 in   151 mm	1.6 in   40 mm	6.6 in   167 mm	1.6 lb   .74 kg	Aluminum 7075-T6, Stainless Steel, Plastic	Clear Natural Anodized, Powder Coated White	10G   22G   26G	26.5 lb   12 kg	Yes
0480149	Defibrillator Mount   Zoll AED 3 in   TRAXX	12.2 in   312 mm	9 in   229 mm	10.2 in   260 mm	5.7 lb   2.6 kg	Aluminum	Powder Coated White	10G   22G   26G	7.7 lb   3.5 kg	Yes
0480150	Defibrillator Mount   Zoll AED 3 Direct Mount	12.2 in   312 mm	7.5 in   191 mm	10.2 in   260 mm	4.1 lb   1.9 kg	Aluminum	Powder Coated White	10G   22G   26G	7.7 lb   3.5 kg	Yes
0480151	Wall Mount   D360	5.9 in   151 mm	15.1 in   384 mm	6.6 in   167 mm	4 lb   1.8 kg	Aluminum	Powder Coated White	10G   22G   26G	—	Yes
0480153	Litter Arm   Loading Wedge	1.8 in   45 mm	7.7 in   195 mm	2 in   52 mm	.8 lb   .37 kg	Plastic	Black	—	—	Yes
0480155	Pouch Mount Plate   3T2	17.8 in   453 mm	1.1 in   28.5 mm	16.4 in   416 mm	4.2 lb   1.9 kg	Aluminum, Plastic	Powder Coated White	10G   22G   26G	15 lb   6.8 kg	Yes
0480156	D360 ProPac/Zoll Adapter   P/N FA868A151	1.6 in   41 mm	4.5 in   114 mm	7.1 in   180 mm	3.7 lb   1.7 kg	Aluminum	Powder Coated White	10G   20G   26G	—	Yes
0480158	Oxygen Mount   Double	34.5 in   876 mm	8.9 in   226 mm	17.8 in   451 mm	34 lb   15.4 kg	Plastic, Aluminum	Powder Coated White	10G   22G   26G	—	Yes
0480159	Ventilator Mount   Weinmann Lifebase 3NG	11 in   280 mm	15.9 in   404 mm	2.2 in   56 mm	4.8 lb   2.2 kg	Aluminum	Powder Coated White	10G   20G   26G	—	Yes
0480160	Pouch Mount Plate   4T2	23.1 in   588 mm	1.1 in   28.5 mm	16.4 in   416 mm	4.42 lb   2.46 kg	Aluminum, Plastic	Powder Coated White	10G   22G   26G	19.9 lb   9.04 kg	Yes
0480161	Pouch Mount Plate   2T2	11.7 in   298 mm	1.1 in   28.5 mm	16.4 in   416 mm	2.8 lb   1.25 kg	Aluminum, Plastic	Powder Coated White	10G   22G   26G	10 lb   4.52 kg	Yes
0480162	Pouch Mount Plate   1T2	7.2 in   183 mm	1.1 in   28.5 mm	16.4 in   416 mm	1.6 lb   .72 kg	Aluminum, Plastic	Powder Coated White	10G   22G   26G	5.0 lb   2.26 kg	Yes
0480163	Oxygen Mount   CD 02 single Cylinder Mount	19.7 in   500 mm	5.1 in   130 mm	6.7 in   167 mm	6.1 lb   2.7 kg	Aluminum, Rubber	Powder Coated White	10G   22G   26G	77.2 lb   25 kg	Yes
0480164	Swivel SafeMount   360deg "long handle"	2.5 in   66 mm	11.4 in   291 mm	6.5 in   167 mm	19 lb   8.1 kg	Aluminum	Powder Coated White & Black	10G   22G   26G	55.1 lb   25 kg	Yes
0480165	Swivel SafeMount   360deg "short handle"	2.5 in   66 mm	9.8 in   250 mm	6.5 in   167 mm	17.9 lb   8.1 kg	Aluminum	Powder Coated White & Black	10G   22G   26G	55.1 lb   25 kg	Yes
0480166	SafeSeat   Dual Lapsash	38.1 in   970 mm	22.2 in   565 mm	22 in   500 mm	55.1 lb   2 kg	Aluminum	Black	—	—	Yes
0480167	Adapter Plate   LifePak 15	.62 in   16 mm	6.85 in   174 mm	3.7 in   94 mm	.4 lb   .2 kg	Plastic	Black	—	—	Yes
0480168	Spacer   Litter Arm Spacer	1.4 in   36 mm	1.7 in   45 mm	1.9 in   50 mm	.11 lb   .05 kg	Plastic	Black	10G   22G   26G	—	Yes
0480169	Suction Mount   SAM e.p.s. (MGE)	9.7 in   247 mm	.3 in   10 kg	5.1 in   130 kg	6 lb   2.7 kg	Stainless Steel	Natural	10G   20G   26G	—	Yes
0480170	Swivel Mount   Rear Holder	3.3 in   85 mm	.9 in   25 mm	1.3 in   35 mm	.22 lb   .1 kg	Aluminum	Powder Coated White	10G   20G   26G	—	Yes
0480171	Track System   1016 Centre Drop-in	7.41 in   189 mm	0.5 in   12.7 mm	40 in   1016 mm	7.5 lb   3.4 kg	Aluminum	Anodized	10G   22G   26G	220.4 lb   100 kg	Yes
0480172	SafeMount   HD Threaded (40 kg)	6 in   151 mm	1.4 in   34.5 mm	6.7 in   167 mm	1.9 lb   0.85 kg	Aluminum, Plastic	Powder Coated White	10G   22G   26G	88 lb   40 kg	Yes
0480173	SafePouch   Small Jumbo	4.7 in   120 mm	4.7 in   120 mm	3.9 in   100 mm	.3 lb   .1 kg	Matte Grey Plastic	Gloss Grey Shell	10G   20G   26G	0.5 lb   .2 kg	Yes
0480174	SafePouch   Medium Jumbo	4.7 in   120 mm	4.7 in   120 mm	7.9 in   200 mm	.6 lb   .25 kg	Matte Grey Plastic	Gloss Grey Shell	10G   20G   26G	2.5 lb   1.3 kg	Yes
0480175	SafePouch   Large Vertical Jumbo	10.2 in   260 mm	4.7 in   120 mm	7.9 in   200 mm	1 lb   .4 kg	Matte Grey Plastic	Gloss Grey Shell	10G   20G   26G	4.5 lb   2 kg	Yes
0480176	SafePouch   Large HOZ Jumbo	4.7 in   120 mm	4.7 in   120 mm	15.7 in   400 mm	1 lb   .4 kg	Matte Grey Plastic	Gloss Grey Shell	10G   20G   26G	4.5 lb   2 kg	Yes
0480177	SafePouch   Dual Large Vertical Jumbo	10.2 in   260 mm	4.7 in   120 mm	15.7 in   400 mm	1.8 lb   .8 kg	Matte Grey Plastic	Gloss Grey Shell	10G   20G   26G	8.8 lb   4 kg	Yes
0480179	Litter Arm   Light	.7 in   18 mm	.4 in   10 mm	19.9 in   505 mm	.19 lb   .09 kg	Aluminum & Plastic	Brushed	—	—	Yes
0480180	Defibrillator Wall Mount   Tempus LS Kit	6.4 in   165 mm	6.4 in   165 mm	7.6 in   195 mm	1.6 lb   .7 kg	Stainless Steel	Brushed	10G   20G   26G	—	Yes

## Product Spec Index

ITEM NUMBER	PRODUCT	WIDTH	DEPTH	LENGTH	WEIGHT	MATERIAL	FINISH	CERTIFICATION STANDARD	LOAD CAPACITY/ SWL	SOLD IN USA
0480181	Defibrillator Wall Mount   Tempus PRO Kit	5.9 in   151 mm	6.7 in   171 mm	12.2 in   310 mm	1.3 lb   6.1 kg	Stainless Steel	Brushed	10G   20G   26G	—	Yes
0480182	Defibrillator Mount   Tempus Pro 360 Swivel Mount Complete	8.07 in   205 mm	11.41 in   290 mm	6.49   165 mm	5.3 lb   2.4 kg	Aluminum	Powder Coated White	10G   22G   26G	19.84 lb   9 kg	Yes
0480183	Defibrillator Mount   Tempus LS Stacked Adapter Only	15.55 in   395 mm	5.51   140 mm	4 in   100 mm	1.32 lb   0.6 kg	Aluminum	Powder Coated White	10G   22G   26G	6.61 lb   3 kg	Yes
0480184	Defibrillator Counter Top   D360 Swivel	7.6 in   195 mm	1.4 in   37 mm	7.2 in   185 mm	1.9 lb   .8 mm	Aluminum	Anodized	10G   20G	—	Yes
0480185	Defibrillator Counter Top   D360 Zoll Mount Kit	7.6 in   195 mm	2.3 lb   60 mm	7.2 lb   185 mm	2.8 lb   1.3 kg	Aluminum	Anodized	10G   20G	—	Yes
0480186	Vent Mount   D360 Hamilton Mount Kit	8.2 in   209.5 mm	12.8 in   327 mm	7.7 mm   197 mm	3.5 lb   1.5 kg	Aluminum	Anodized	10G   20G	—	Yes
0480187	Vent Mount   D360 Hamilton Adapter	8.2 in   209.5 mm	105. in   266.7 mm	7.7 in   197 mm	1.4 lb   .6 kg	Aluminum	Anodized	10G   20G	—	Yes
0480190	SafeMount   Tablet General B101UC	5.9 in   151 mm	9.3 in   235 mm	6.6 in   167 mm	2.3 lb   1.06 kg	Plastic	Black	10G   22G   26G	4 lb   1.9 kg	Yes
0480191	Pouch Mount   Track Adapter - Pouch Mount Plate	7.2 in   183 mm	2.1 in   54 mm	22.2 in   564 mm	2.7 in   1.2 mm	Aluminum	Powder Coated White	10G   22G   26G	35 lb   16 kg	Yes
0480193	SafePak   Multi-Mount - 3-Row (SafeMount included)	16.7 in   425 mm	1.7 in   45 mm	23.6 in   600 mm	7.3 lb   3.3 kg	Aluminum, Plastic	Powder Coated White	10G   22G   26G	26.5 lb   12 kg	Yes
0480194	ACC Mount   Direct Mount Adapter Block	3.34 in   85 mm	0.47 in   12 mm	3.34 in   85 mm	0.88 lb   0.40 kg	Aluminum	Powder Coated White	10G   22G   26G	—	Yes
0480195	Sharps Bin Mount   1.4LT Sharps Mount	6.29 in   160 mm	4.33 in   110 mm	11.81 in   300 mm	2.42 lb   1.1 kg	Aluminum	Powder Coated White	10G   22G   26G	4.4 lb   2 kg	Yes
0480197	Defibrillator Mount   Zoll INTRAXX Wall Mount (Charging)	8.2 in   210 mm	11.8 in   300 mm	6.2 in   160 mm	8.1 lb   3.7 kg	Aluminum	Powder Coated White	10G   22G   26G	26.4 lb   12 kg	Yes
0480198	ACC - Mount   SafeMount to Aviation D360 Adapter Plate	5.9 in   151 mm	.31 in   8 mm	7.5 in   193 mm	.4 lb   .19 kg	Aluminum	Standard	—	—	Yes
0480199	Suction Unit Mount   Combo Adapter Mount	6.1 in   155 mm	2.3 in   60 mm	6.4 in   165 mm	2.6 lb   1.1 kg	Aluminum	Powder Coated White	10G   22G   26G	—	Yes
0480201	SafePak   Multi-Mount - 2-Row (SafeMount Included)	16 in   401 mm	1.8 in   44 mm	17 in   425 mm	5.3 lb   2.4 kg	Aluminum, Plastic	Powder Coated White	10G   22G   26G	26.4 lb   12 kg	Yes
0480204	SafePak   Ledge & Strap Kit	4.2 in   104 mm	4.2 in   104 mm	10 in   250 mm	0.88 lb   0.4 kg	Aluminum	Powder Coated White	10G   22G   26G	17.6 lb   8 kg	Yes
0480207	SafePak   Multi-Mount - 2-Row Base Plate	16 in   401 mm	1.8 in   44 mm	17 in   425 mm	3.5 lb   1.6 kg	Aluminum, Plastic	Powder Coated White	10G   22G   26G	26.4 lb   12 kg	Yes
0480208	Service Kit   SafePak Multi-Mount Wedge	—	—	—	—	Plastic	—	—	—	Yes
0480209	SafePak   Multi-Mount - 3-Row Base Plate	16.7 in   425 mm	1.1 in   30 mm	23.6 in   600 mm	5 lb   2.3 kg	Aluminum, Plastic	Powder Coated White	10G   22G   26G	26.5 lb   12 kg	Yes
0480210	Lock Knob   Multi Mount	6.29 in   160 mm	4.33 in   110 mm	11.81 in   300 mm	13.4 lb   0.61 kg	Aluminum	Powder Coated White	10G   22G   26G	4.4 lb   2 kg	Yes
0480213	Service Kit   Zoll	—	—	—	—	—	—	—	—	Yes
0480214	Service Kit   LP 15	—	—	—	—	—	—	—	—	Yes
0480215	Litter Arm   Board Lock	1.7 in   42 mm	1.6 in   40 mm	6.3 in   160 mm	0.44 lb   0.2 kg	Aluminum	Powder Coated White	10G	—	Yes
0480217	Defibrillator Mount   Zoll X Direct Wall Mount (Charging)	8.2 in   210 mm	11.8 in   300 mm	6.2 in   100 mm	3.9 lb   2.8 kg	Aluminum	Powder Coated White	10G   22G   26G	26.4 lb   12 kg	Yes
0480218	Defibrillator Mount   Tempus Mounting Kit Only	6.3 in   160 mm	5.12 in   130 mm	4 in   100 mm	1.43 lb   0.65 kg	Aluminum	Powder Coated White	10G   22G   26G	19.84 lb   9 kg	Yes
0480220	Litter Arm   Ratchet Style Multipurpose	6.6 in   167 mm	27 in   685 mm	7.2 in   182 mm	13.2 lb   6 kg	Aluminum	Powder Coated White	10G	353 lb   160 kg	Yes
0480223	Suction Unit Mount   Askir	10.4 in   265 mm	7.9 in   200 mm	4.1 in   105 mm	1.6 lb   0.73 kg	Aluminum	Powder Coated White	10G   22G   26G	8.8 lb   4 kg	Yes
0480224	Defibrillator Wall Mount   G2 Schiller Defeguard Touch 7	7.55 in   192 mm	2.2 in   56 mm	8.03 in   204 mm	16.9 lb   7.7 kg	Aluminum	Powder Coated White	10G   22G   26G	55.11 lb   25 kg	Yes
0480227	ACC - Mount   HP Printer Mount	14.5 in   368 mm	12 in   304 mm	9.8 in   250 mm	5.4 lb   2.43 kg	Aluminum	Powder Coated White	—	6.6 lb   3 kg	Yes
0480228	Service Kits   Swivel Mount Short Handle	—	—	—	—	—	—	—	—	Yes
0480229	Service Kits   Swivel Mount Long Handle	—	—	—	—	—	—	—	—	Yes

## Product Spec Index

ITEM NUMBER	PRODUCT	WIDTH	DEPTH	LENGTH	WEIGHT	MATERIAL	FINISH	CERTIFICATION STANDARD	LOAD CAPACITY/ SWL	SOLD IN USA
0480233	Suction Unit Mount   Askir iNTRAXX Mount	10.4 in   265 mm	9.1 in   230 mm	6.1 in   155 mm	3.3 lb   1.5 kg	Aluminum	Powder Coated White	10G   22G   26G	8.8 lb   4 kg	Yes
0480235	Track System   TracLINXX	3.4 in   87.5 mm	0.5 in   12.7 mm	40 in   1016 mm	3.3 lb   1.5 kg	Aluminum	Anodized	10G   22G   26G	—	Yes
0480237	Defibrillator Mount   360° Swivel w/ Rear Vertical Holder	5 in   125 mm	11.6 in   291 mm	6.7 in   167 mm	18.1 lb   8.2 kg	Aluminum	Powder Coated White	10G   22G   26G	55 lb   25 kg	Yes
0480238	CPR Mount	22.9-24.3 in   582-616 mm	12.6 in   320 mm	20.7 in   526 mm	7 lb   3.2 kg	Aluminum	Powder Coated White	10G   22G   26G	26.5 lb   12 kg	Yes
0480239	Defibrillator Mount   Zoll AED Plus Adaptor Kit	10 in   255 mm	2.4 in   60 mm	8.7 in   220 mm	0.97 lb   0.44 kg	Aluminum	Powder Coated white	10G   22G   26G	—	Yes
0480240	Service Kit   SafeMounts	—	—	—	—	—	—	—	—	Yes
0480241	Defibrillator Mount   AED Mount Wall iNTRAXX	10.2 in   260 mm	9 in   229 mm	14.4 in   367 mm	6.85 lb   3.11 kg	Aluminum	Powder Coated White	10G   22G   26G	7.7 lb   3.5 kg	Yes
0480242	Defibrillator Mount   AED Mount Bolt On	10.2 in   260 mm	7.5 in   191 mm	13.8 in   3650 mm	5.3 lb   2.4 kg	Aluminum	Powder Coated white	10G   22G   26G	7.7 lb   3.5 kg	Yes
0480242	Defibrillator Mount   AED Mount Bolt On	10.2 in   260 mm	7.5 in   191 mm	13.8 in   3650 mm	5.3 lb   2.4 kg	Aluminum	Powder Coated White	10G   22G   26G	7.7 lb   3.5 kg	Yes
0480248	Accessory Mount   Sharps Bin Mount	11.5 in   288	7.6 in   191 mm	9.7 in   242 mm	4.4 lb   2 kg	Aluminum	Powder Coated White	10G   22G   26G	2.2 lb   1 kg	Yes
0480249	Accessory Mount   Trash Bin Mount	11.5 in   288 mm	7.6 in   191 mm	9.7 in   242 mm	4.4 lb   2 kg	Aluminum	Powder Coated White	10G   22G   26G	2.2 lb   1 kg	Yes
0480250	Container   Sharps	12.4 in   319 mm	4.4 in   110 mm	11.6 in   290 mm	—	Plastic	Red	—	—	Yes
0480251	Container   Trash	12 in   300 mm	4.4 in   110 mm	11.6 in   290 mm	—	Plastic	Red	—	—	Yes

### KEY

(W) Width is measured as 'Y' axis in relation to mounting to the track  
 (D) Depth is measured as 'Z' axis in relation to mounting to the track  
 (L) Length is measured as 'X' axis in relation to mounting to the track

### WARRANTY

- iN/TRAXX track "Limited Lifetime Warranty"
- All other products come with a 2-year warranty
- For details refer to FERNO warranty statement.



70 Weil Way  
Wilmington, OH 45177

Ambulance Systems

Aviation

Emergency Response System

Military

Mortuary

Rescue